

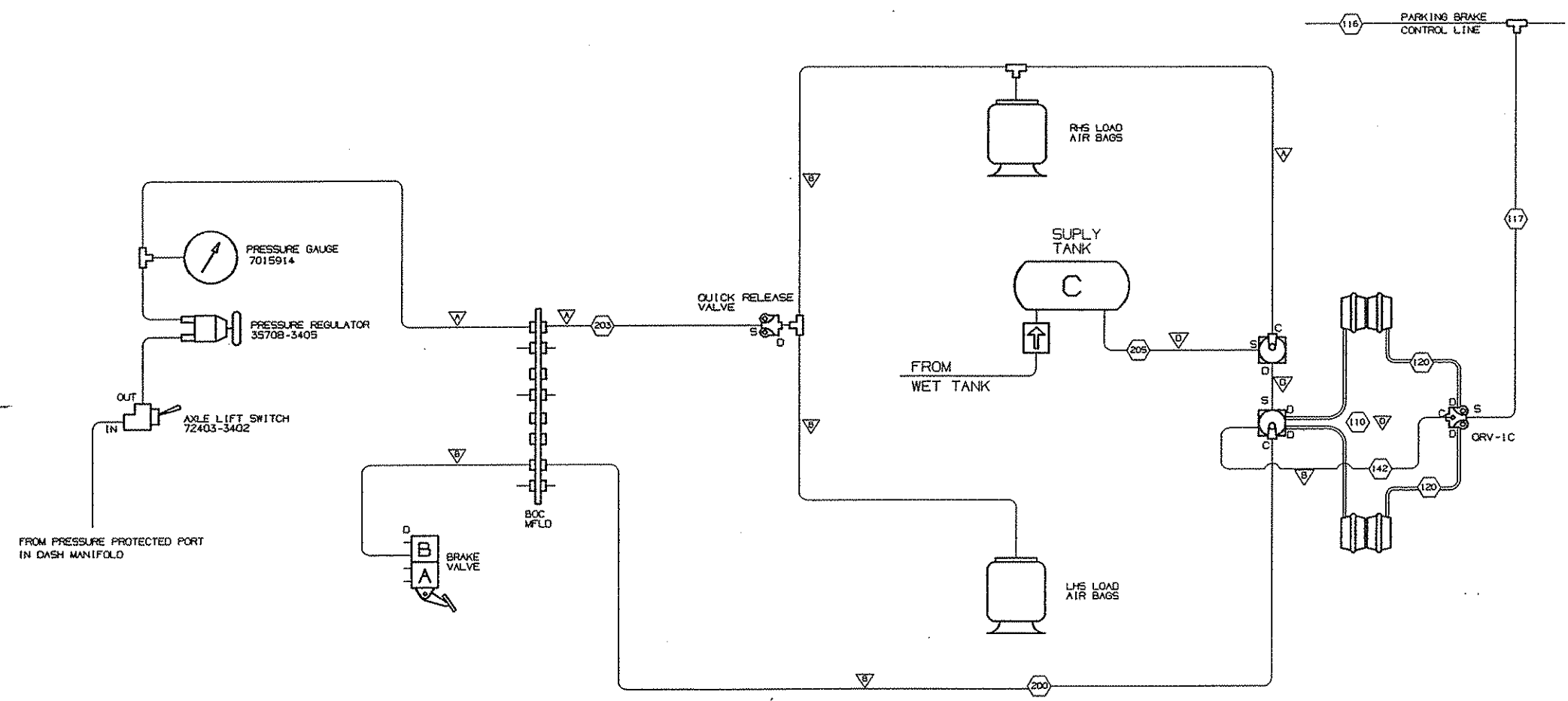
PUSHER/TAG AXLE BRAKE AND SUSPENSION SCHEMATICS

1|FOLD

| | | |
|---|---|---------------------------|
|  | WESTERN STAR TRUCKS INC. COMPUTER GRAPHICS KELOWNA, B.C. | |
| | DIVIDER PAGE | REV. NEW SHT 1 OF 1 |

CERT. STAMP OR SERIAL PART NUMBER IN SUITABLE LOCATION DO NOT SCALE DRAWING IF IN DOUBT, USE REMOVE ALL SHARP EDGES ORIGINAL CREATED ON WEST I COMPUTER GRAPHICS

| ENO | CHG | CHANGE | BY | DATE | CKD | APVD |
|--------|-----|--|-----|---------|-----|------|
| 35038 | A | UPDATED TO CADD PARK ORV WAS ORV/DCV | KMS | 18JAN93 | DW | |
| T66037 | B | REDRAWN ON "D" SIZE ORV-1C WAS ORV POSITION OF REGULATOR AND SWITCH REVERSED | FWS | 27JAN94 | BP | |
| B5589 | C | LINE 200 WAS 135, LINE 203 WAS 3, LINE 205 WAS 40 | RJS | 31MAY96 | | |



| SYMBOL | NYLON | HOSE |
|--------|------------|------|
| ▽ | 1/4 | * 4 |
| ▽ | 3/8 | * 6 |
| ▽ | 1/2 | * 8 |
| ▽ | 5/8 | * 10 |
| ▽ | - | * 12 |
| ▽ | 3/4 COPPER | |
| ▽ | 1/8 | - |

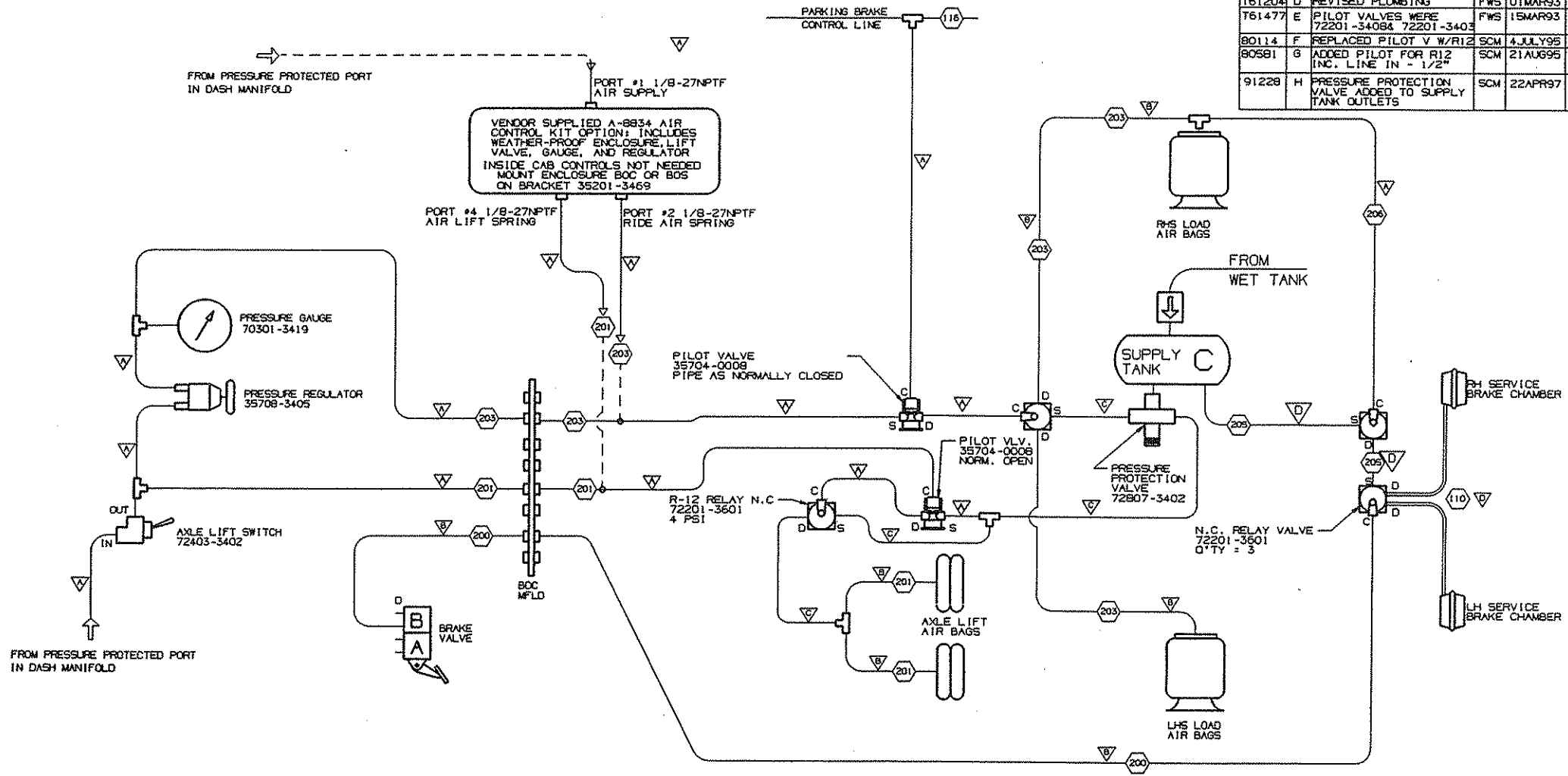
| SYMBOL | DESC. |
|--------|-----------|
| S | SUPPLY |
| D | DELIVERY |
| C | CONTROL |
| E | EXHAUST |
| R | RESERVOIR |

NOTES:
 1. SINGLE LINES DENOTE FIXED AIR LINES,
 DOUBLE LINES DENOTE FLEXIBLE HOSES.

35781-3417
 PRINT ISSUE DATE 10/96

| X | | SCHEMATIC | |
|---|--|-------------|---------|
| PUSHER/TAG 35781-3417 | | DESCRIPTION | |
| WESTERN STAR TRUCKS INC. COMPUTER GRAPHICS KELYONA, B.C. | | | |
| TOLERANCES UNLESS NOTED: | | BY | DATE |
| | | DWN KMS | 18JAN93 |
| | | CKD | |
| | | APVD DW | 18JAN93 |
| | | ENO | 35038 |
| | | SCALE | NONE |
| NEWAY PUSHER/TAG | | MR NO. 1320 | |
| AXLE PIPING | | 35781-3417 | |

| END | CHG | CHANGE | BY | DATE | CKD | APVD |
|--------|-----|--|-----|----------|-----|------|
| 34494 | A | REVISED PLUMBING | TWB | 19SEPT92 | | |
| T61175 | B | CHANGED LIFT AIR LINES FROM A SIZE TO B | FWS | 25JAN93 | | |
| T61204 | C | ADDED A-8834 OPTION | FWS | 28JAN93 | | |
| T61204 | D | REVISED PLUMBING | FWS | 01MAR93 | | |
| T61477 | E | PILOT VALVES WERE 72201-3408& 72201-3403 | FWS | 15MAR93 | | |
| 80114 | F | REPLACED PILOT V W/R12 | SCM | 4JULY95 | | |
| 80581 | G | ADDED PILOT FOR R12 INC. LINE IN - 1/2" | SCM | 21AUG95 | | |
| 91228 | H | PRESSURE PROTECTION VALVE ADDED TO SUPPLY TANK OUTLETS | SCM | 22APR97 | | |



| SYMBOL | SIZE | Ø |
|--------|------|------|
| ▽ | 1/4 | • 4 |
| ▽ | 3/8 | • 6 |
| ▽ | 1/2 | • 8 |
| ▽ | 5/8 | • 10 |

| SYMBOL | DESC. |
|--------|-----------|
| S | SUPPLY |
| D | DELIVERY |
| C | CONTROL |
| E | EXHAUST |
| R | RESERVOIR |

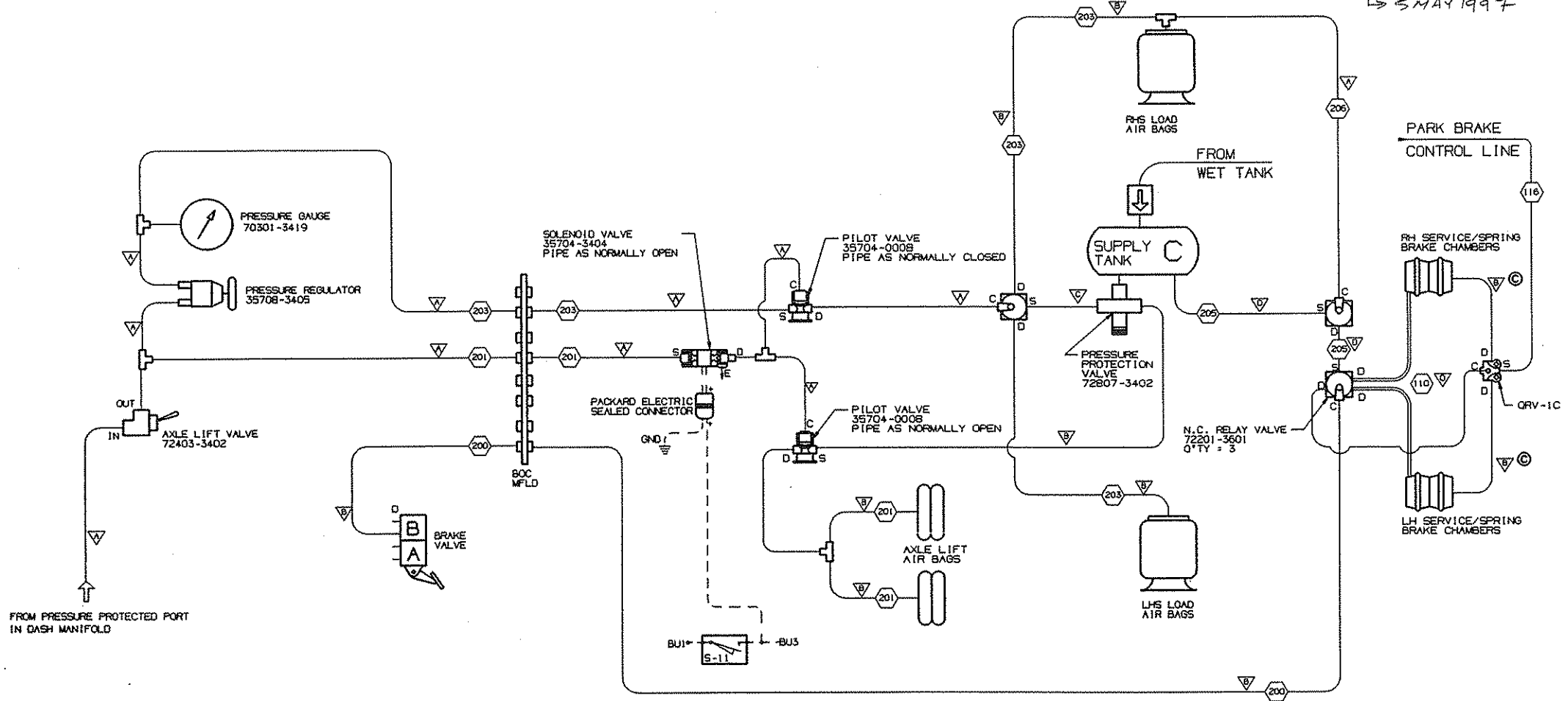
- NOTES:
1. SINGLE LINES DENOTE FIXED AIR LINES, DOUBLE LINES DENOTE FLEXIBLE HOSES.
 2. SERVICE BRAKES AND LOAD BAGS DEACTIVATED WITH PARKING BRAKES APPLIED.

35781-3427
PRINT THESE DATE 08/11

| COMP. NO. | DESCRIPTION | SIZE | MATERIAL |
|---------------------------|--|-------------|----------|
| WST1 | WESTERN STAR TRUCKS INC. COMPUTER GRAPHICS WELDONA, B.C. | | |
| TOLERANCES (UNLESS NOTED) | | BY | DATE |
| | | DWN TWB | 29JULY92 |
| | | CKD | |
| | | APVD | |
| | | END | TSG707 |
| | | SCALE | NTS |
| APPLICATION PART NO. | | MR NO. 1320 | |
| SCHEMATIC-TURNER | | 35781-3427 | |
| HLM SERIES PUSHER | | | |

| END | CHG | CHANGE | BY | DATE | CHKD | APVD |
|--------|-----|--|-----|---------|------|------|
| T64129 | A | ADDED CONTROL LINE TO ORV-1C VALVE | FWS | 19OCT93 | | RMP |
| T66830 | B | ADDED NOTE 3 | FWS | 22JUL94 | | RMP |
| 40070 | C | DROPLINE WAS 1/2" | FWS | 07APR95 | | RMP |
| 91228 | D | PRESSURE PROTECTION VALVE ADDED TO SUPPLY TANK OUTLETS | SCM | 22APR97 | | |

→ 5 MAY 1997



| SYMBOL | SIZE | • |
|--------|------|------|
| ▽ | 1/4 | • 4 |
| ▽ | 3/8 | • 6 |
| ▽ | 1/2 | • 8 |
| ▽ | 5/8 | • 10 |

| SYMBOL | DESCRIPTION |
|--------|-------------|
| S | SUPPLY |
| D | DELIVERY |
| C | CONTROL |
| E | EXHAUST |
| R | RESERVOIR |

- NOTES:
1. SINGLE LINES DENOTE FIXED AIR LINES, DOUBLE LINES DENOTE FLEXIBLE HOSES.
 2. DASHED LINES INDICATE ELECTRICAL.
 3. AXLE WILL LIFT WHEN REVERSE GEAR IS ENGAGED. AXLE REMAINS DOWN AND LOADED WHEN PARK BRAKES ARE APPLIED.

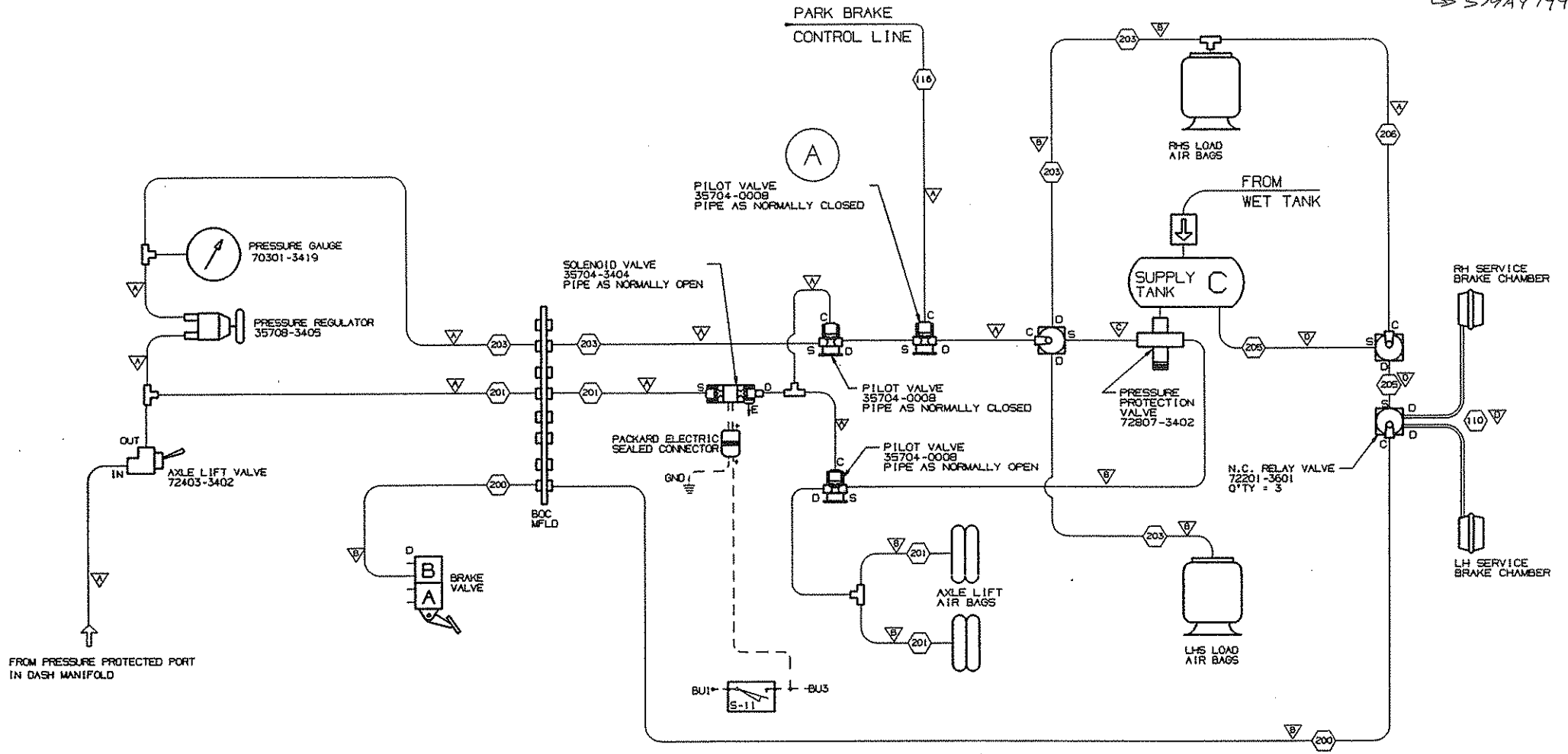
35781-3434
PRINT ISSUE DATE 1997

| | | | |
|--|---|---------|--|
| X AIR SCHEMATIC - WITH SPRING BRAKE CHAMBERS | | | |
| DESCRIPTION | | | |
| WESTERN STAR TRUCKS INC. COMPUTER GRAPHICS KELOMA, S.C. | | | |
| TOLERANCES (UNLESS NOTED) | BY | DATE | |
| | DWN FWS | 31AUG93 | |
| | CHK | | |
| | APVD RMP | 05SEP93 | |
| | END | T64129 | |
| | SCALE | NONE | |
| SHEETS: 01 OF 01 | | | |
| APPLICATION PART NO. | MR NO. | 1322 | |
| SPRING BRAKES 35781-3434 | SCHEMATIC-WATSON CHALIN LIFT AXLE 35781-3434 | | |

DATE: 29 NOV 94
 PART: 357B1-3437
 DO NOT SCALE DRAWING
 ORIGINAL CREATED ON WEST
 COMPUTER GRAPHICS

| ENO | CHG | CHANGE | BY | DATE | CHKD | APVD |
|-------|-----|--|-----|---------|------|------|
| 39484 | A | PARK BRAKE PILOT VALVE WAS NORMALLY OPEN | FWS | 29NOV94 | RMP | |
| 91228 | B | PRESSURE PROTECTION VALVE ADDED TO SUPPLY TANK OUTLETS | SCM | 22APR97 | | |

SMAY 1997



| SYMBOL | SIZE | # |
|--------|------|------|
| ▽ | 1/4 | # 4 |
| ▽ | 3/8 | # 6 |
| ▽ | 1/2 | # 8 |
| ▽ | 5/8 | # 10 |
| | | |
| | | |
| | | |

| SYMBOL | DESCRIPTION |
|--------|-------------|
| S | SUPPLY |
| D | DELIVERY |
| C | CONTROL |
| E | EXHAUST |
| R | RESERVOIR |
| | |
| | |

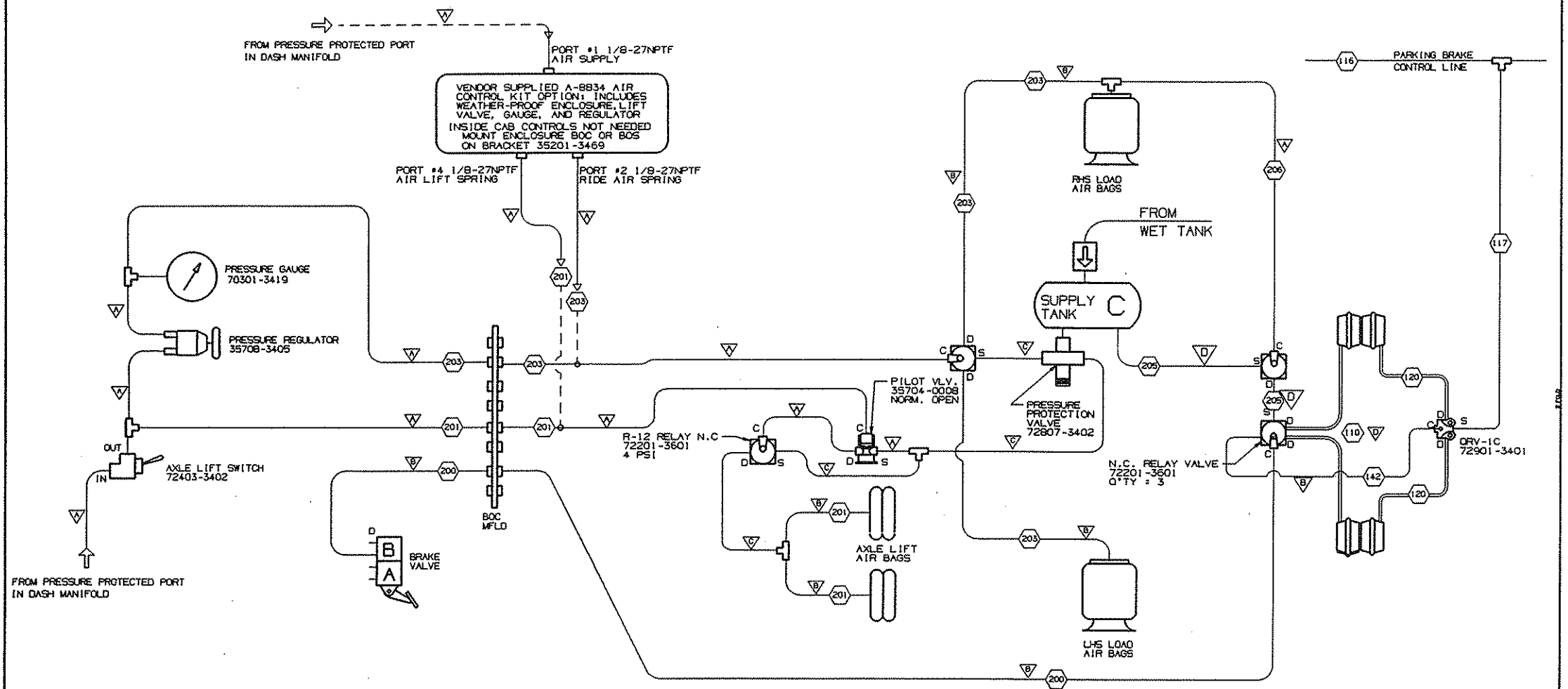
- NOTES:
1. SINGLE LINES DENOTE FIXED AIR LINES. DOUBLE LINES DENOTE FLEXIBLE HOSES.
 2. DASHED LINES INDICATE ELECTRICAL.
 3. AXLE WILL LIFT WHEN REVERSE GEAR IS ENGAGED. AXLE REMAINS DOWN WHEN PARK BRAKES ARE APPLIED. HOWEVER, LOAD AIR BAGS UNLOAD.

357B1-3437
 PRINT ISSUE DATE: 29 NOV 94

| AIR SCHEM- WITHOUT SPRING BRAKE CHAMBERS | | | |
|---|------|---------|------------|
| DESCRIPTION | | | |
| WESTERN STAR TRUCKS INC. COMPUTER GRAPHICS KENOSHA, WIS. | | | |
| TOLERANCES (UNLESS NOTED) | BY | DATE | |
| | DWN | FWS | 25JUL94 |
| | CHKD | | |
| | APVD | RMP | 25JUL94 |
| ENO | | | 784432 |
| SCALE | | | NONE |
| SHEMATIC-WATSON | | MFR NO. | 1322 |
| CHALIN LIFT AXLE | | | 357B1-3437 |

CST, STAMP WITH PART NUMBER DO NOT SCALE DRAWING IF IN DOUBT, ASK REMOVE ALL SHARP CORNERS ORIGINAL CREATED ON WEST1 COMPUTER GRAPHICS

| ECO | CHG | CHANGE | BY | DATE | CKD | APVD |
|-------|-----|--|-----|---------|-----|------|
| 91228 | A | PRESSURE PROTECTION VALVE ADDED TO SUPPLY TANK OUTLETS | SCM | 22APR97 | | |



| SYMBOL | SIZE | Ø |
|--------|------|------|
| ▽ | 1/4 | • 4 |
| ▽ | 3/8 | • 6 |
| ▽ | 1/2 | • 8 |
| ▽ | 5/8 | • 10 |

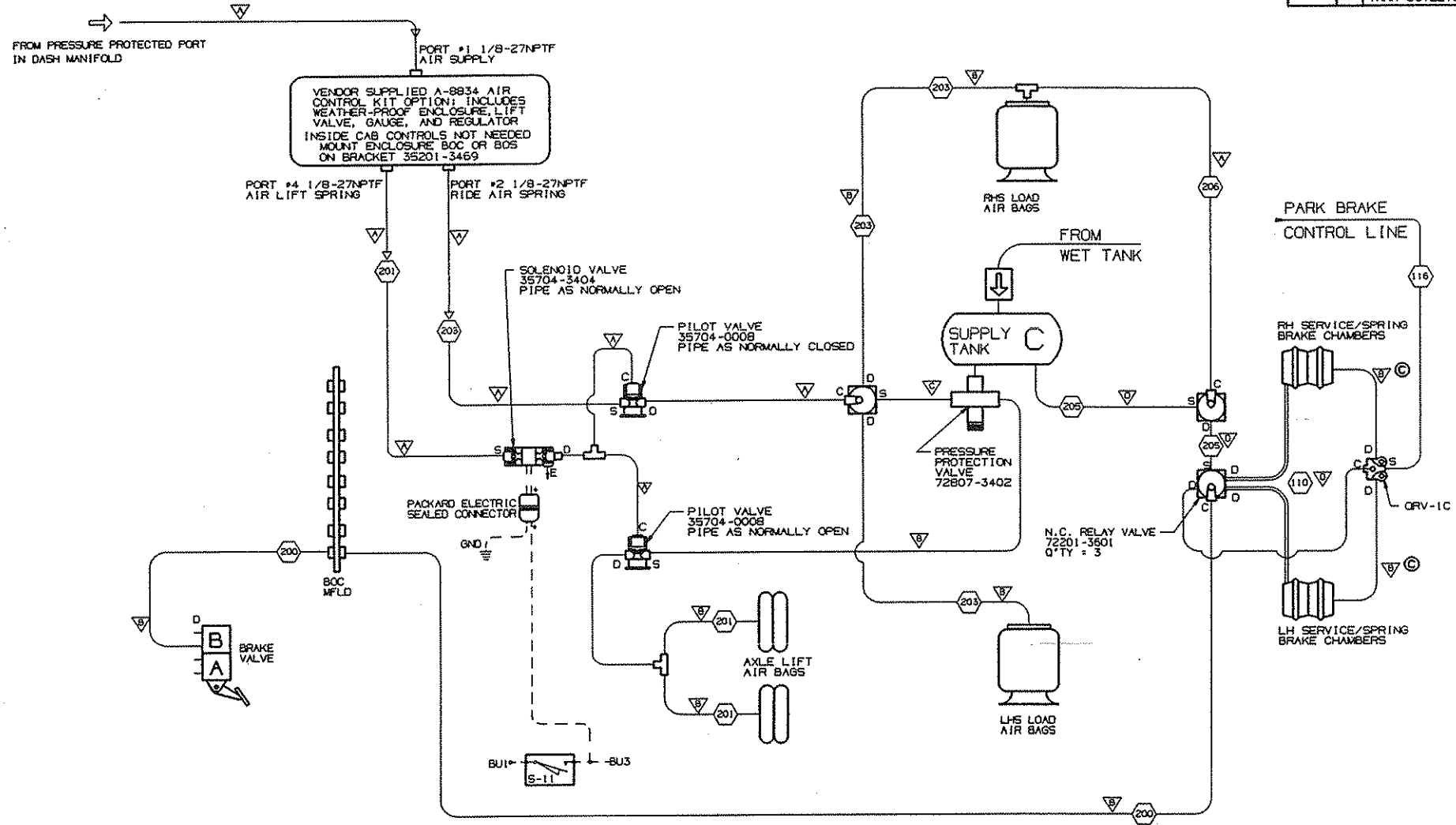
| SYMBOL | DESC. |
|--------|-----------|
| S | SUPPLY |
| D | DELIVERY |
| C | CONTROL |
| E | EXHAUST |
| R | RESERVOIR |

- NOTES:
- SINGLE LINES DENOTE FIXED AIR LINES, DOUBLE LINES DENOTE FLEXIBLE HOSES.
 - BASED ON DRAWING 357B1-3427

357B1-3442
PRINT ISSUE DATE 10/97
A

| COMP. NO. | DESCRIPTION | SIZE | MATERIAL |
|----------------------------|--|------------------------------|----------|
| | WESTERN STAR TRUCKS INC. COMPUTER GRAPHICS REDDING, B.C. | | |
| TOLERANCES (UNLESS NOTED): | | BY | DATE |
| | | DWN | 08SEP95 |
| | | CKD | |
| | | APVD | |
| | | ECO | 80652 |
| | | SCALE | NTS |
| APPLICATOR PART NO. | | MR NO. 1328 | |
| SCHEMATIC-TURNER | | HLM SERIES PUS-ER 357B1-3442 | |

| ENO | CHK | CHANGE | BY | DATE | CKD | APVD |
|-------|-----|--|-----|---------|-----|------|
| 91228 | A | PRESSURE PROTECTION VALVE ADDED TO SUPPLY TANK OUTLETS | SCM | 22APR97 | | |



VENDOR SUPPLIED A-8834 AIR CONTROL KIT OPTION; INCLUDES WEATHER-PROOF ENCLOSURE, LIFT VALVE, GAUGE, AND REGULATOR INSIDE CAB CONTROLS NOT NEEDED MOUNT ENCLOSURE BOC OR BOS ON BRACKET 35201-3469

| LINE SIZE LEGEND | | |
|------------------|------|------|
| SYMBOL | SIZE | # |
| ▽ | 1/4 | # 4 |
| ▽ | 3/8 | # 6 |
| ▽ | 1/2 | # 8 |
| ▽ | 5/8 | # 10 |
| | | |
| | | |
| | | |
| | | |

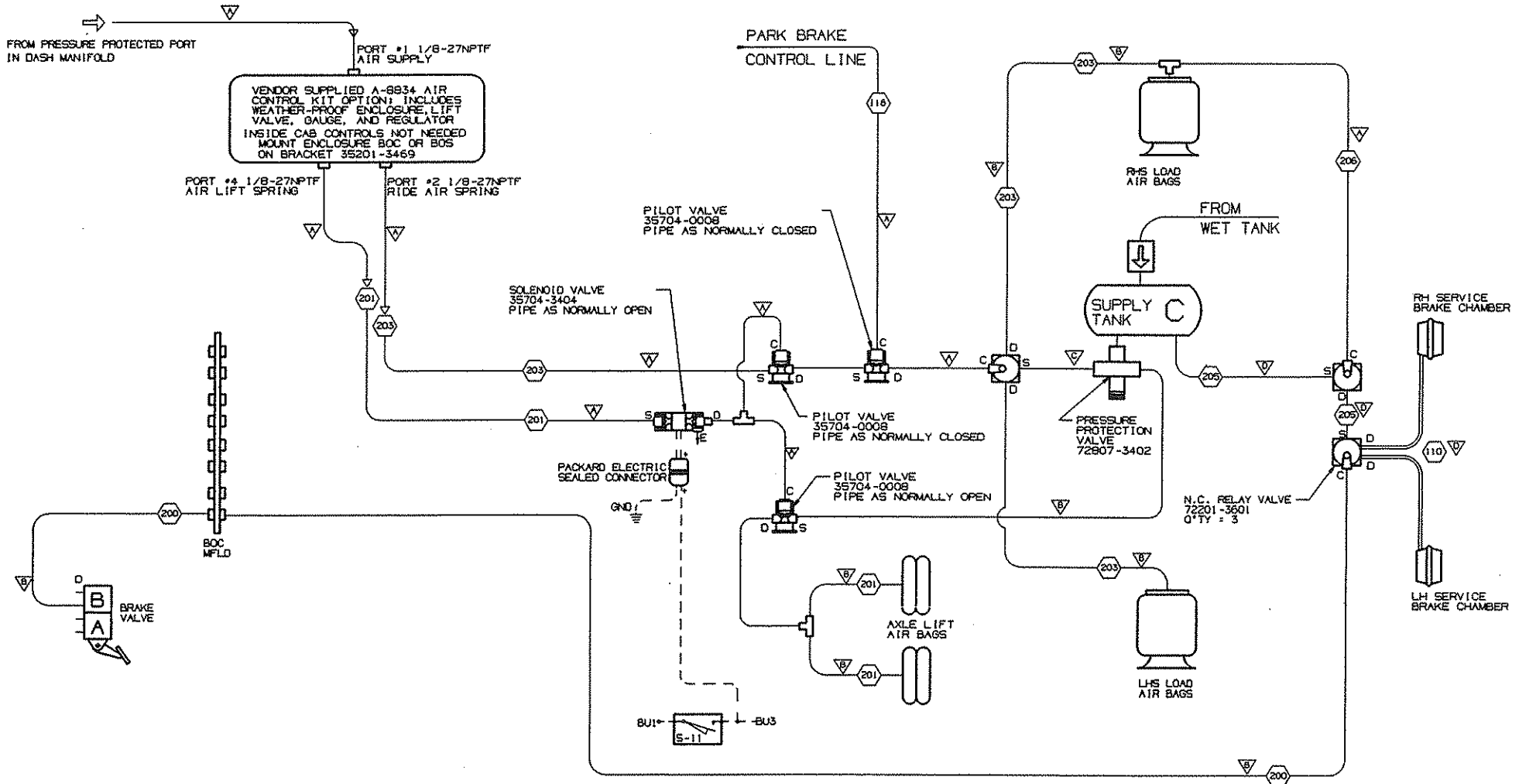
| PORT LEGEND | |
|-------------|-------------|
| SYMBOL | DESCRIPTION |
| S | SUPPLY |
| D | DELIVERY |
| C | CONTROL |
| E | EXHAUST |
| R | RESERVOIR |
| | |
| | |
| | |

- NOTES:
- SINGLE LINES DENOTE FIXED AIR LINES, DOUBLE LINES DENOTE FLEXIBLE HOSES.
 - DASHED LINES INDICATE ELECTRICAL.
 - AXLE WILL LIFT WHEN REVERSE GEAR IS ENGAGED. AXLE REMAINS DOWN AND LOADED WHEN PARK BRAKES ARE APPLIED.

357B1-3443
PRINT DATE FOR A

| AIR SCHEMATIC - WITH SPRING BRAKE CHAMBERS | | | |
|--|-------|------|-------------|
| DESCRIPTION | | | |
| WESTERN STAR TRUCKS INC. COMPUTER GRAPHICS KENONA, S.C. | | | |
| TOLERANCES (UNLESS NOTED) | BY | DATE | |
| | DWN | SCH | 27NOV90 |
| | CKD | | |
| | APVD | FWS | 29NOV95 |
| | ECO | | 21.874 |
| | SCALE | | NONE |
| SPRING BRAKES 357B1-3443 APPLICATION PART NO. | | | |
| SCHEMATIC-WATSON | | | MR NO. 1322 |
| CHALIN LIFT AXLE | | | 357B1-3443 |

| END | CHG | CHANGE | BY | DATE | CKD | APVD |
|-------|-----|--|-----|---------|-----|------|
| 91228 | A | PRESSURE PROTECTION VALVE ADDED TO SUPPLY TANK OUTLETS | SCM | 22APR97 | | |



| LINE SIZE LEGEND | | |
|------------------|-----|------|
| ▽ | 1/4 | # 4 |
| ▽ | 3/8 | # 6 |
| ▽ | 1/2 | # 8 |
| ▽ | 5/8 | # 10 |
| | | |
| | | |
| | | |

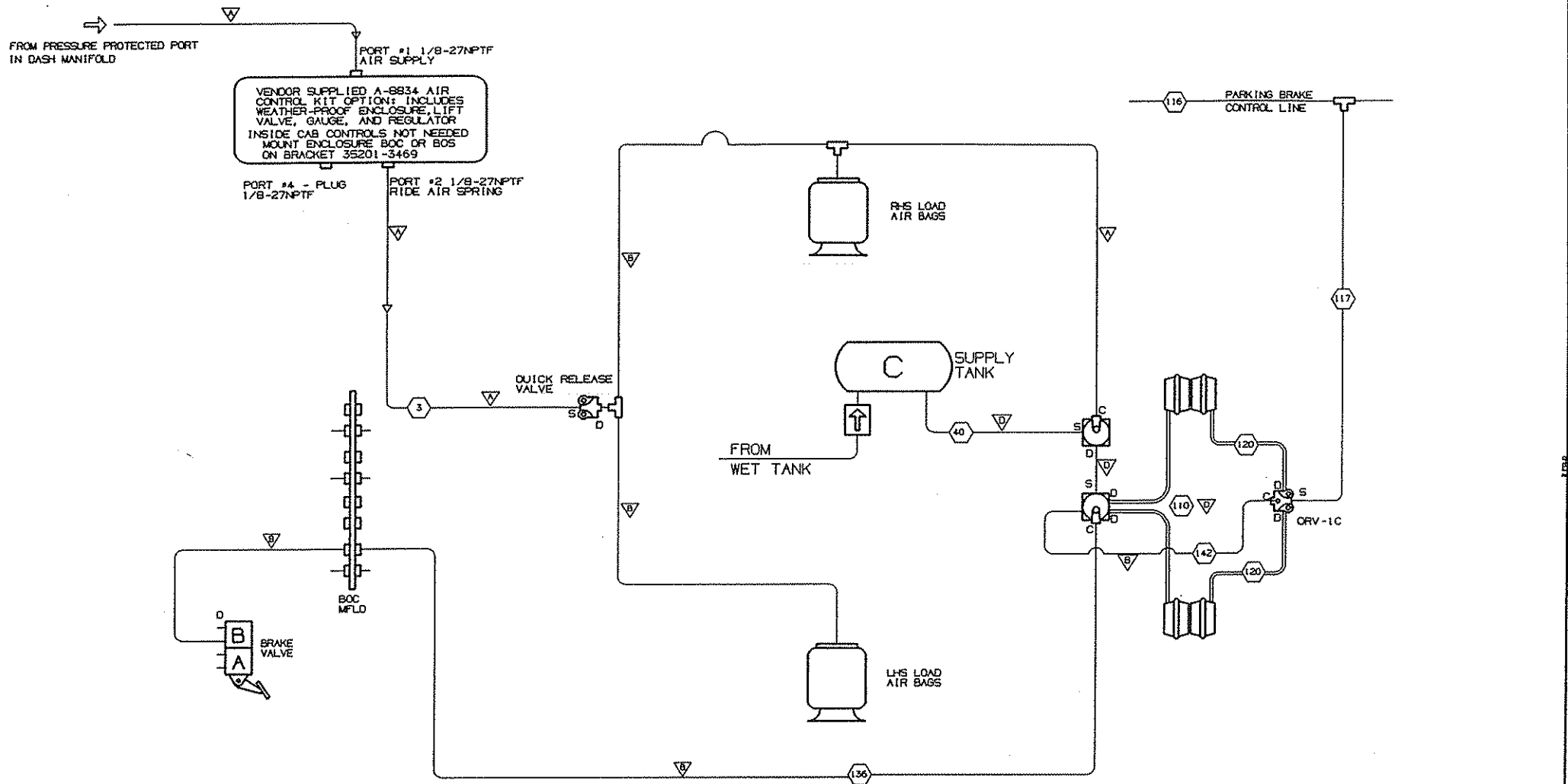
| PORT LEGEND | |
|-------------|-----------|
| S | SUPPLY |
| D | DELIVERY |
| C | CONTROL |
| E | EXHAUST |
| R | RESERVOIR |
| | |
| | |

- NOTES:
1. SINGLE LINES DENOTE FIXED AIR LINES, DOUBLE LINES DENOTE FLEXIBLE HOSES.
 2. DASHED LINES INDICATE ELECTRICAL.
 3. AXLE WILL LIFT WHEN REVERSE GEAR IS ENGAGED. AXLE REMAINS DOWN WHEN PARK BRAKES ARE APPLIED. HOWEVER, LOAD AIR BAGS UNLOAD.

35781-3444
PRINT ISSUE DATE 08/97

| AIR SCHEM - WITHOUT SPRING BRAKE CHAMBERS | | DESCRIPTION | |
|--|-------|-------------|--------|
| WESTERN STAR TRUCKS INC. COMPUTER GRAPHICS KENONA, S.C. | | | |
| TOLERANCES (UNLESS NOTED) | BY | DATE | |
| | DWN | SCM | 4JAN98 |
| | CKD | | |
| | APVD | FWS | 5JAN98 |
| | END | | 22AP97 |
| | SCALE | NONE | |
| S-11 | | | |
| S-11 | | MR NO. | 1320 |
| S-11 | | 35781-3444 | |

| ENO | CHG | CHANGE | BY | DATE | CKD | APVD |
|-------|-----|---|-----|---------|-----|------|
| 91228 | A | PRESSURE PROTECTION ADDED TO CONTROL SUPPLY AIR | SCM | 22APR97 | | |



| LINE SIZE LEGEND | | |
|------------------|------------|------|
| SYMBOL | NYLON | HOSE |
| ▽ | 1/4 | # 4 |
| ▽ | 3/8 | # 6 |
| ▽ | 1/2 | # 8 |
| ▽ | 5/8 | # 10 |
| ▽ | - | # 12 |
| ▽ | 3/4 COPPER | |
| ▽ | 1/8 | - |

| PORT LEGEND | |
|-------------|-----------|
| SYMBOL | DESC. |
| S | SUPPLY |
| D | DELIVERY |
| C | CONTROL |
| E | EXHAUST |
| R | RESERVOIR |

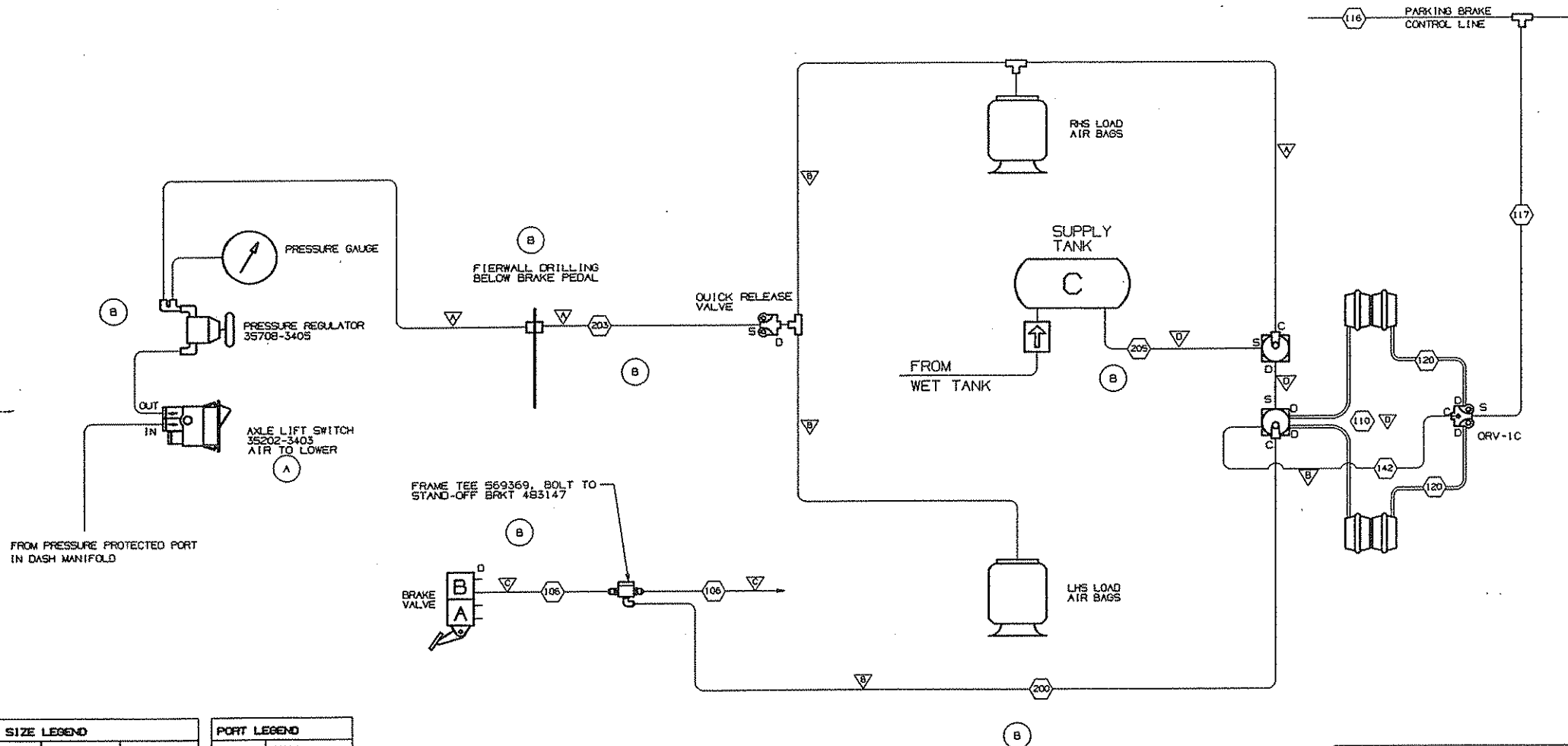
NOTES:
 1. SINGLE LINES DENOTE FIXED AIR LINES,
 DOUBLE LINES DENOTE FLEXIBLE HOSES.

35781-3445
 PRINTED DATE 07/97

| PUSHER/TAG APPLICATION PART NO. | SCHEMATIC DESCRIPTION | |
|---------------------------------|--|--|
| | 35781-3445 | WESTERN STAR TRUCKS INC. COMPUTER GRAPHICS KENOSHA, WIS. |
| | TOLERANCES (UNLESS NOTED) | BY DATE |
| | | DWN SCM 16JAN96 |
| | | CKD |
| | | APVD FWS 17JAN96 |
| | | ECO 82575 |
| | SCALE | NONE |
| | THIS DOCUMENT CONTAINS PROPRIETARY INFORMATION AND IS THE PROPERTY OF WESTERN STAR TRUCKS INC. IT IS TO BE USED ONLY FOR THE PURPOSES SPECIFIED IN THE ORIGINAL ORDER. | |
| | NEWAY PUSHER/TAG AXLE PIPING | MR NO. 132B |
| | | 35781-3445 |

CART. STATE OR SPEC. PART NUMBER DO NOT SCALE DRAWING IF IN DOUBT, ASK FINISH ALL SHARP EDGES ORIGINAL CREATED ON WESTI COMPUTER GRAPHICS

| ECO | CHG | CHANGE | BY | DATE | CKO | APVD |
|-------|-----|--|-----|---------|-----|------|
| B5164 | A | SWITCH No WAS 35202-3402 | TWB | BMAY96 | | TWB |
| B5589 | B | ADDED MORE DETAIL TO AIRLINE FITTINGS. ADDED FIREWALL DRILLING NOTE. LINE 200 WAS 36, LINE 203 WAS 3, LINE 205 WAS 4 | RJS | 30MAY96 | | |



| LINE SIZE LEGEND | | | PORT LEGEND | |
|------------------|------------|------|-------------|-----------|
| SYMBOL | NYLON | HOSE | SYMBOL | DESC. |
| ▽ | 1/4 | • 4 | S | SUPPLY |
| ▽ | 3/8 | • 6 | D | DELIVERY |
| ▽ | 1/2 | • 8 | C | CONTROL |
| ▽ | 5/8 | • 10 | E | EXHAUST |
| ▽ | - | • 12 | R | RESERVOIR |
| ▽ | 3/4 COPPER | | | |
| ▽ | 1/8 | - | | |

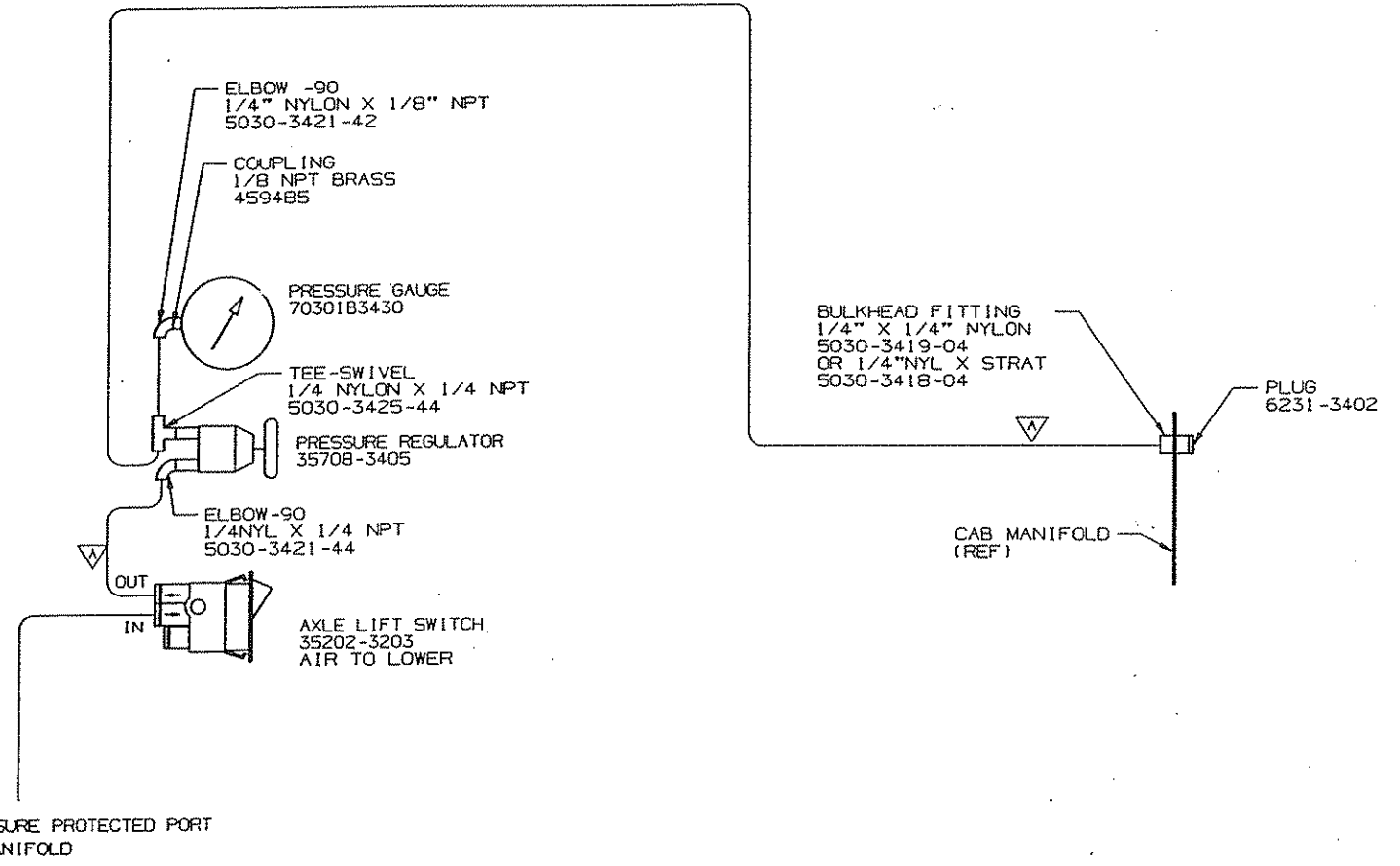
NOTES:
 1. SINGLE LINES DENOTE FIXED AIR LINES,
 DOUBLE LINES DENOTE FLEXIBLE HOSES.

357B1-3447
 PRINT ISSUE DATE 1996

| REV | DESCRIPTION | BY | DATE |
|-----|--|-------|-------------|
| X | SCHEMATIC | | |
| 1 | WESTERN STAR TRUCKS INC. COMPUTER GRAPHICS KILORUA, S.C. | | |
| | TOLERANCES (UNLESS NOTED) | DWN | RJS 13FEB96 |
| | | CKO | |
| | | APVD | |
| | | ECO | 83160 |
| | | SCALE | NONE |
| | NEWAY PUSHER/TAG MR NO. 1328 | | |
| | AXLE PIPING, C604 | | |

CAST, STAMP OR STENCIL PART NUMBER IN SUITABLE LOCATION DO NOT SCALE DRAWING IF IN DOUBT, ASK REMOVE ALL SHARP EDGES ORIGINAL CREATED ON WEST COMPUTER GRAPHICS

| | | | | | | |
|-------|-----|--------------------------|-----|---------|-----|------|
| ECO | CHG | CHANGE | BY | DATE | CKD | APVD |
| 85164 | A | AIR VALVE WAS 35202-3402 | TWB | 10MAY96 | | TWB |



| |
|----------------------|
| 357B1-3448 |
| PRINT ISSUE DATE CHG |
| A |

| LINE SIZE LEGEND | | |
|------------------|------------|------|
| SYMBOL | NYLON | HOSE |
| | 1/4 | # 4 |
| | 3/8 | # 6 |
| | 1/2 | # 8 |
| | 5/8 | # 10 |
| | - | # 12 |
| | 3/4 COPPER | - |
| | 1/8 | - |

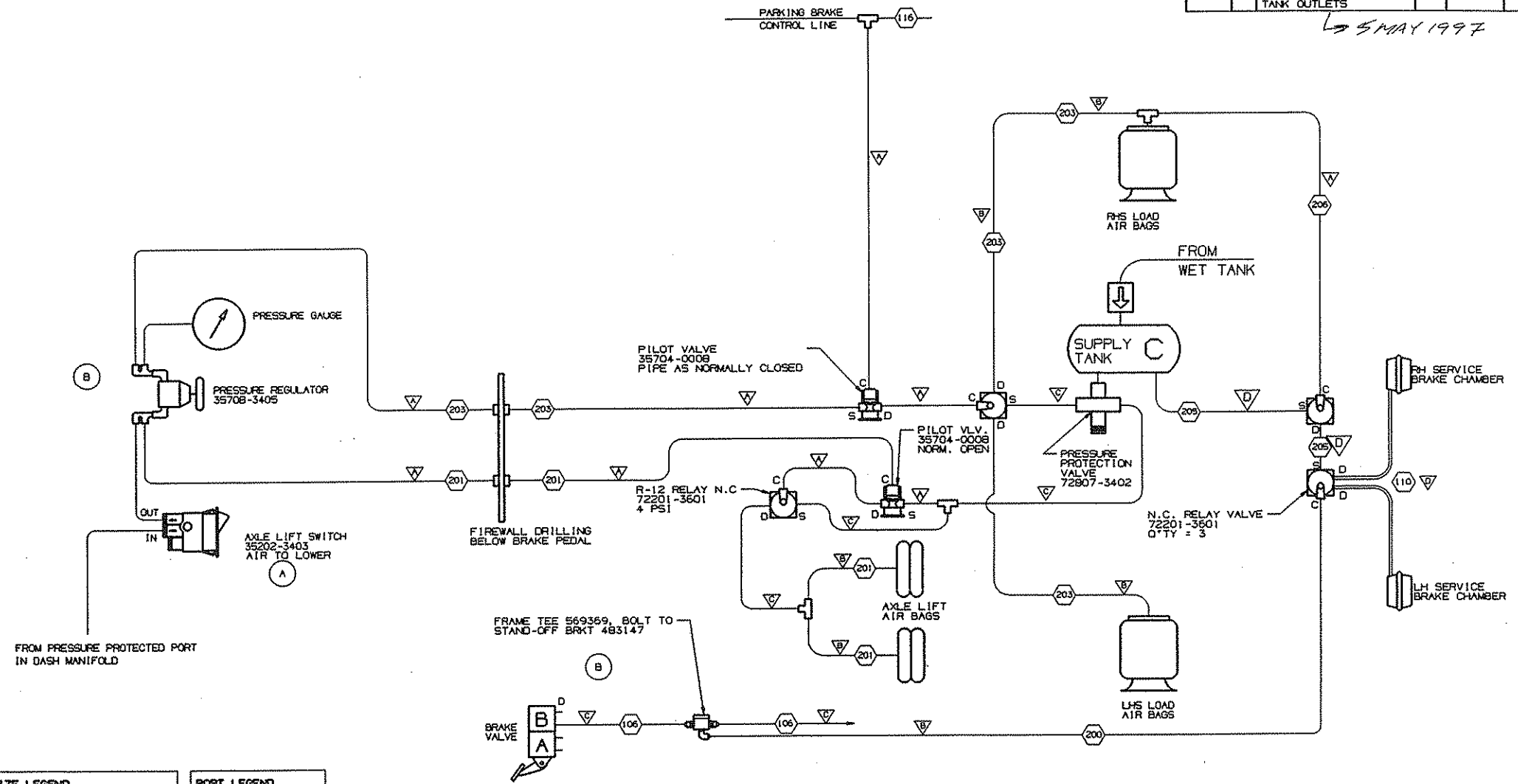
| PORT LEGEND | |
|-------------|-----------|
| SYMBOL | DESC. |
| S | SUPPLY |
| D | DELIVERY |
| C | CONTROL |
| E | EXHAUST |
| R | RESERVOIR |

NOTES:
 1. SINGLE LINES DENOTE FIXED AIR LINES.
 DOUBLE LINES DENOTE FLEXIBLE HOSES.

| | | |
|--|--|-----------------|
| C604 APPLICATION PART NO. 357B1-3448 A REV | SCHEMATIC | |
| | DESCRIPTION | |
| | WESTERN STAR TRUCKS INC. COMPUTER GRAPHICS KELOWNA, B.C. | |
| | TOLERANCES (UNLESS NOTED) | BY DATE |
| | | DWN EGF 7MAR96 |
| | | CKD KMS 22MAR96 |
| | | APVD |
| | | ECO 83727 |
| | | SCALE NONE |
| | THIS DOCUMENT CONTAINS PROPRIETARY INFORMATION AND IT SHALL NOT BE USED OR REPRODUCED OR ITS CONTENTS DISCLOSED IN WHOLE OR IN PART WITHOUT THE PRIOR WRITTEN CONSENT OF WESTERN STAR TRUCKS INC., KELOWNA, B.C. | |
| LIFT AXLE PREP C604 | MR NO. 1328 | |
| 357B1-3448 | | |

| ENO | CHG | CHANGE | BY | DATE | CKD | APVD |
|-------|-----|---|-----|---------|-----|------|
| 85164 | A | VALVE WAS 35202-3402 | TWB | 23MAR96 | | TWB |
| 85589 | B | ADDED NOTE OF FIREWALL DRILLINGS ADDED MORE FITTINGS DETAILS | RJS | 30MAY96 | | |
| 91228 | C | PRESSURE PROTECTION VALVE ADDED TO SUPPLY TANK OUTLETS | SCM | 22APR97 | | |

→ 5 MAY 1997



| SYMBOL | SIZE | # |
|--------|------|----|
| ▽ | 1/4 | 4 |
| ▽ | 3/8 | 6 |
| ▽ | 1/2 | 8 |
| ▽ | 5/8 | 10 |

| SYMBOL | DESC. |
|--------|-----------|
| S | SUPPLY |
| D | DELIVERY |
| C | CONTROL |
| E | EXHAUST |
| R | RESERVOIR |

- NOTES:
- SINGLE LINES DENOTE FIXED AIR LINES, DOUBLE LINES DENOTE FLEXIBLE HOSES.
 - SERVICE BRAKES AND LOAD BAGS DEACTIVATED WITH PARKING BRAKES APPLIED.

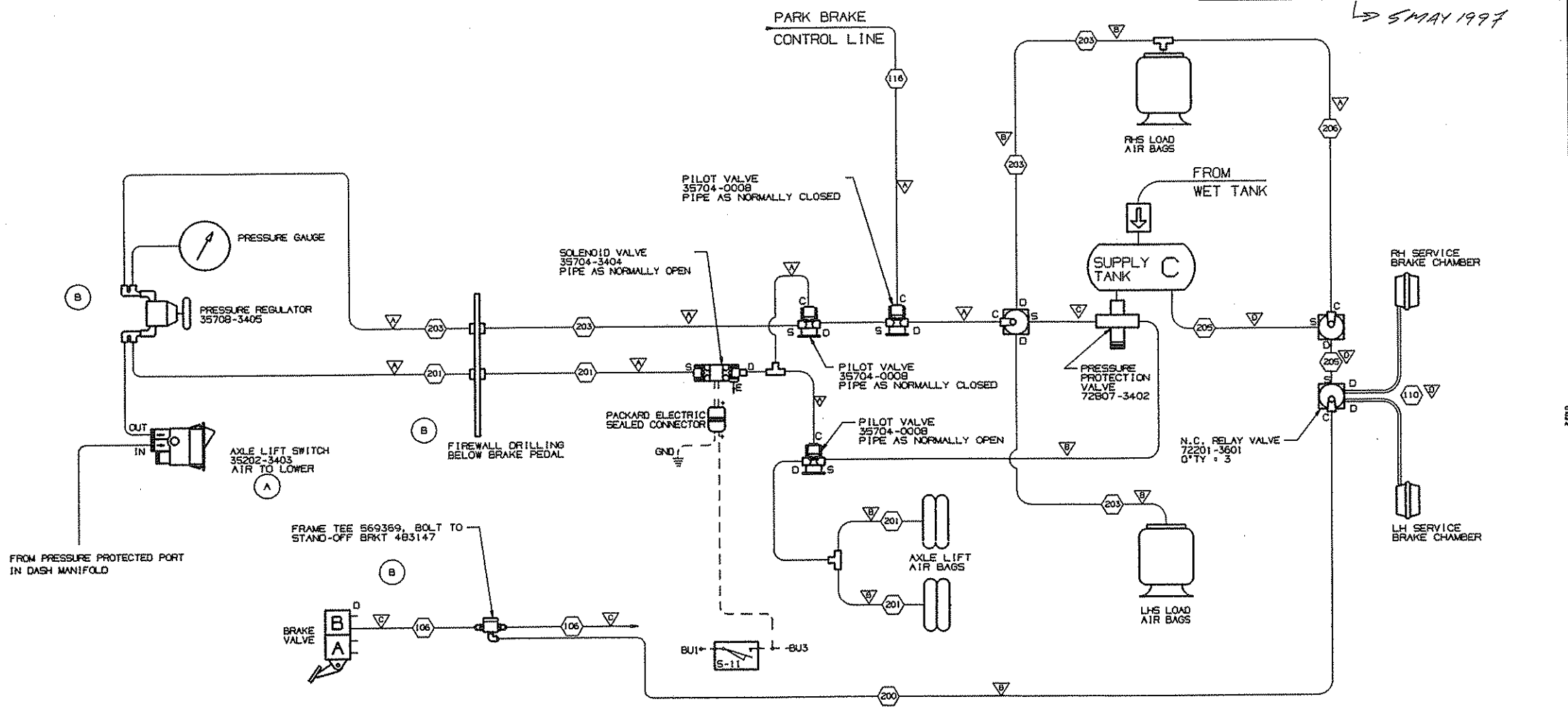
35781-3449
PRINT ISSUE DATE 7/97

| COMP. NO. | DESCRIPTION | SIZE | MATERIAL |
|-------------------------------------|--|-------------|------------|
| | WESTERN STAR TRUCKS INC. COMPUTER GRAPHICS WELDON, B.C. | | |
| TOLERANCES (UNLESS NOTED) | | BY | DATE |
| | | OWN | 22MAR96 |
| | | CKD | |
| | | APVD | |
| | | ECO | 84289 |
| | | SCALE | NTS |
| TURNER LIFT AXLE PIPE SCHEM-C604 | | MR NO. 1328 | 35781-3449 |

DO NOT SCALE DRAWING IF IN DOUBT, REFER TO ORIGINAL CREATED ON WESTAR COMPUTER GRAPHICS

| ENO | CHG | CHANGE | BY | DATE | CKD | APVD |
|-------|-----|---|-----|---------|-----|------|
| 85164 | A | AIR SWITCH WAS 35202-3402 | TWB | 10MAY96 | | TWB |
| 85589 | B | ADDED NOTE OF FIREWALL DRILLINGS ADDED MORE FITTINGS DETAILS | RJS | 30MAY96 | | FWS |
| 91228 | C | PRESSURE PROTECTION VALVE ADDED TO SUPPLY TANK OUTLETS | SCM | 22APR97 | | |

5 MAY 1997



| LINE SIZE LEGEND | | |
|------------------|------|----|
| SYMBOL | SIZE | Ø |
| ▽ | 1/4 | 4 |
| ▽ | 3/8 | 6 |
| ▽ | 1/2 | 8 |
| ▽ | 5/8 | 10 |
| | | |
| | | |

| PORT LEGEND | |
|-------------|-------------|
| SYMBOL | DESCRIPTION |
| S | SUPPLY |
| D | DELIVERY |
| C | CONTROL |
| E | EXHAUST |
| R | RESERVOIR |

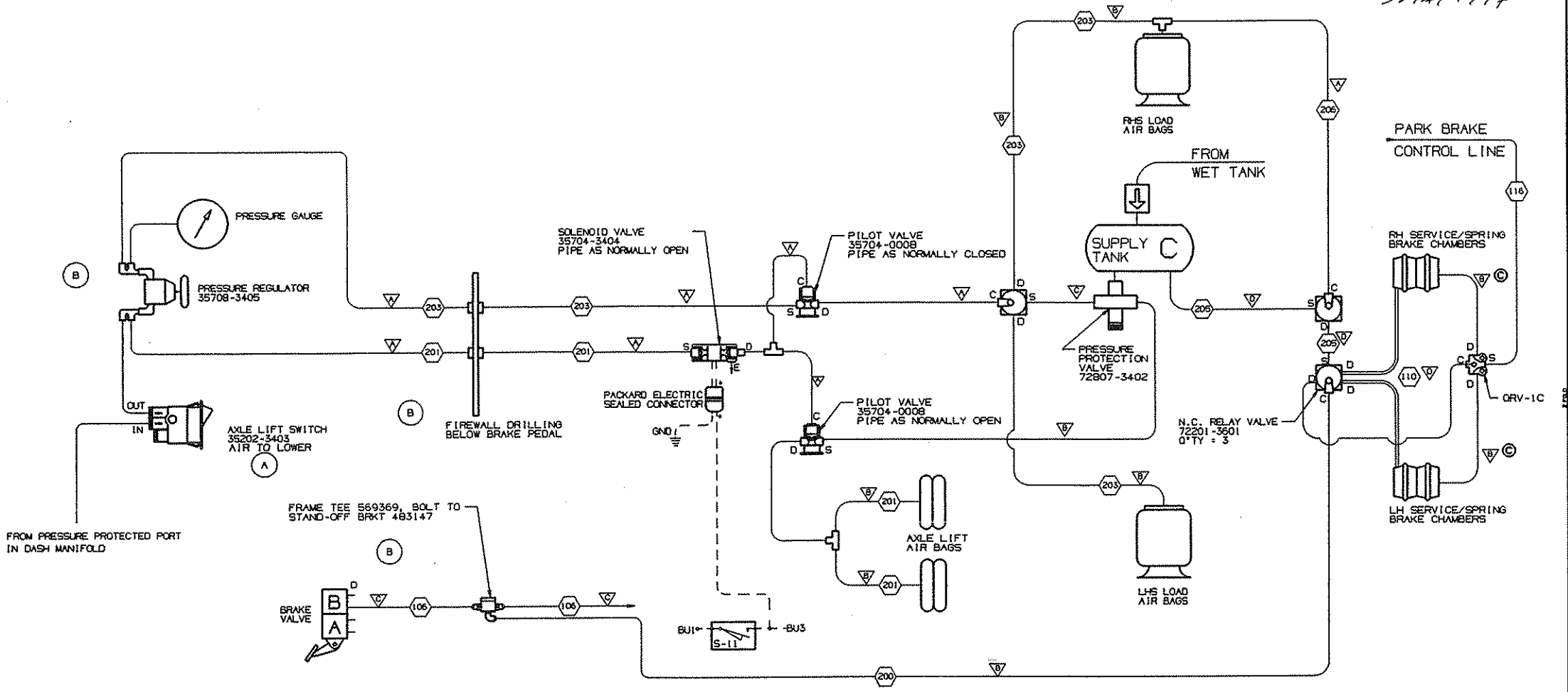
- NOTES:
- SINGLE LINES DENOTE FIXED AIR LINES, DOUBLE LINES DENOTE FLEXIBLE HOSES.
 - DASHED LINES INDICATE ELECTRICAL.
 - AXLE WILL LIFT WHEN REVERSE GEAR IS ENGAGED. AXLE REMAINS DOWN WHEN PARK BRAKES ARE APPLIED. HOWEVER, LOAD AIR BAGS UNLOAD.

35781-3450
PRINT ISSUE DATE
PC

| DESCRIPTION | | | |
|---|-------|------|-------------|
| AIR SCHEM - WITHOUT SPRING BRAKE CHAMBERS | | | |
| WESTERN STAR TRUCKS INC. COMPUTER GRAPHICS MELBOURNE, B.C. | | | |
| TELESPACES (UNLESS NOTED) | BY | DATE | |
| | DWN | SCM | 22MAY96 |
| | CKD | | |
| | APVD | KMS | 1APR96 |
| | ECO | | 84220 |
| | SCALE | NONE | |
| WATSON-CHALIN | | | |
| LIFT AX PIPE C604 | | | MR NO. 1328 |
| | | | 35781-3450 |

| END | CHG | CHANGE | BY | DATE | CKD | APVD |
|-------|-----|--|-----|---------|-----|------|
| B5164 | A | AIR SWITCH WAS 35202-3402 | TWB | 10MAY96 | | TWB |
| 85589 | B | ADDED NOTE OF FIREWALL DRILLINGS ADDED MORE FITTINGS DETAILS | RJS | 30MAY96 | | FWS |
| 91228 | C | PRESSURE PROTECTION VALVE VALVE ADDED TO SUPPLY TANK OUTLETS | SCM | 22APR97 | | |

5 MAY 1997



| LINE SIZE LEGEND | | |
|------------------|------|------|
| SYMBOL | SIZE | |
| ▽ | 1/4 | # 4 |
| ▽ | 3/8 | # 6 |
| ▽ | 1/2 | # 8 |
| ▽ | 5/8 | # 10 |
| | | |
| | | |
| | | |
| | | |

| PORT LEGEND | |
|-------------|-------------|
| SYMBOL | DESCRIPTION |
| S | SUPPLY |
| D | DELIVERY |
| C | CONTROL |
| E | EXHAUST |
| R | RESERVOIR |
| | |
| | |

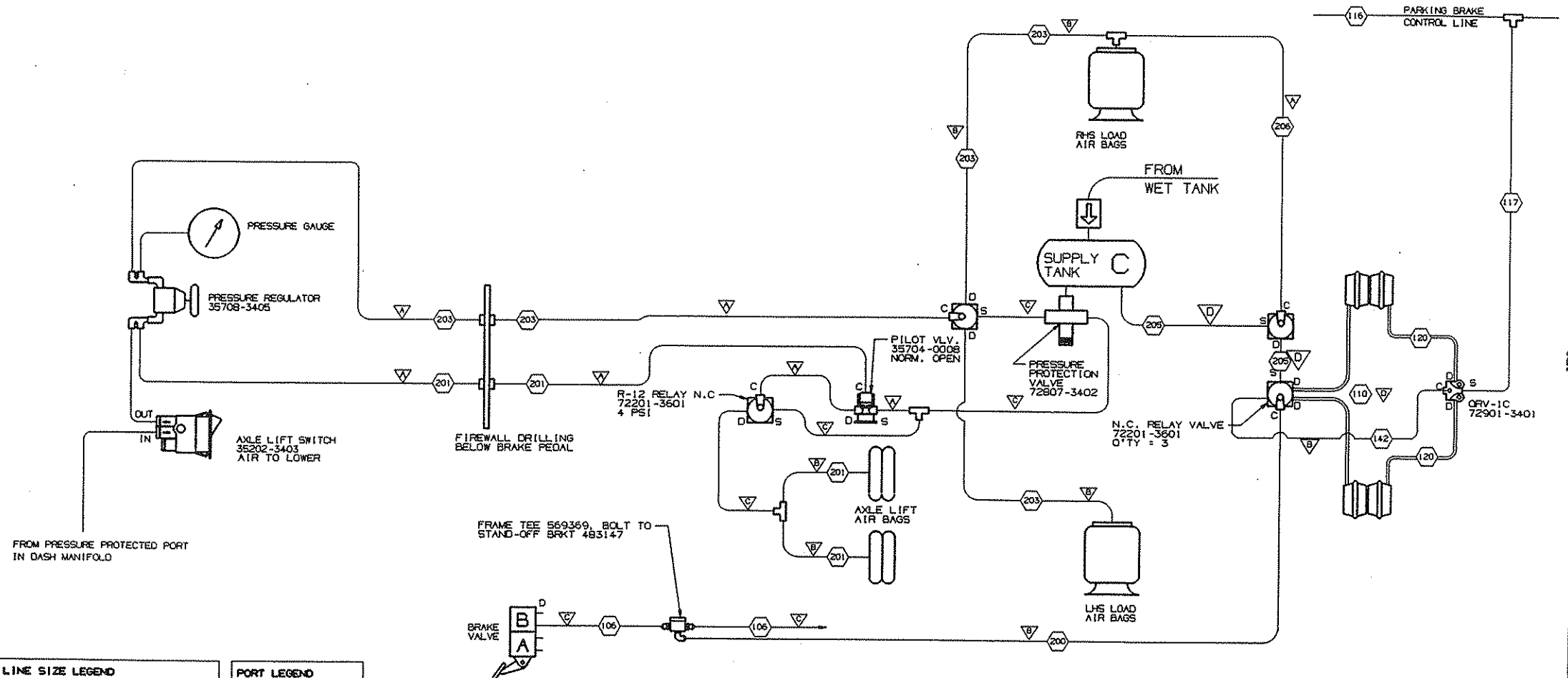
- NOTES:
- SINGLE LINES DENOTE FIXED AIR LINES, DOUBLE LINES DENOTE FLEXIBLE HOSES.
 - DASHED LINES INDICATE ELECTRICAL.
 - AXLE WILL LIFT WHEN REVERSE GEAR IS ENGAGED. AXLE REMAINS DOWN AND LOADED WHEN PARK BRAKES ARE APPLIED.

35781-3451
PRINTED DATE 05/97

| 35781-3451 X | | AIR SCHEMATIC - WITH SPRING BRAKE CHAMBERS | |
|---|-------|--|------------|
| DESCRIPTION | | | |
| WESTERN STAR TRUCKS INC. COMPUTER GRAPHICS KEOLENA, S.C. | | | |
| TOLERANCES (UNLESS NOTED) | BY | DATE | |
| | DWN | SCN | 22MAR98 |
| | CKD | | |
| | APVD | KMS | 11APR96 |
| | ECO | | 84220 |
| | SCALE | | NONE |
| WATSON-CHALIN | | MR NO. | 1328 |
| LIFT AX PIPE-C604 | | | 35781-3451 |

| ECO | CHG | CHANGE | BY | DATE | CKD (APVD) |
|-------|-----|--|-----|---------|------------|
| 91228 | A | PRESSURE PROTECTION VALVE ADDED TO SUPPLY TANK OUTLETS | SCM | 22APR97 | |

→ 5 MAY 1997



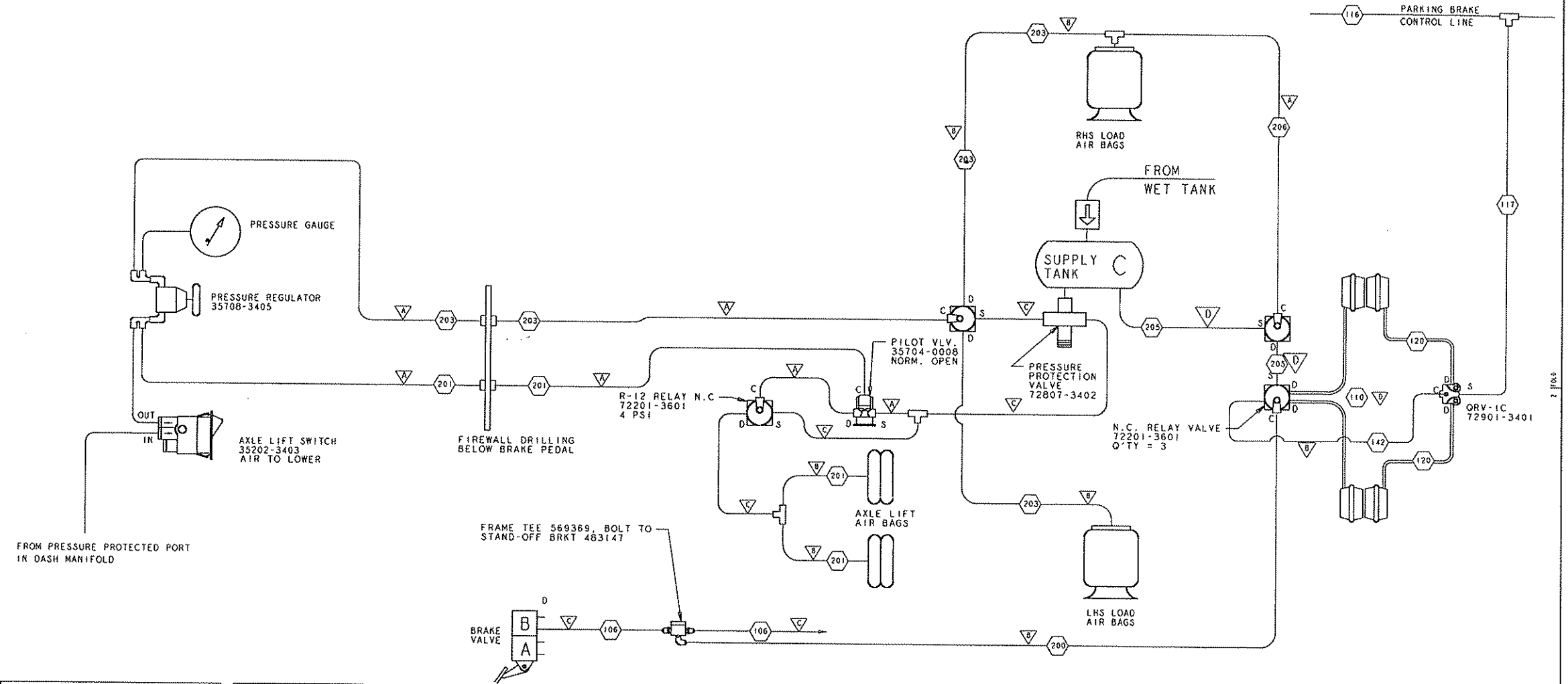
| SYMBOL | SIZE | • |
|--------|------|------|
| ▽ | 1/4 | • 4 |
| ▽ | 3/8 | • 6 |
| ▽ | 1/2 | • 8 |
| ▽ | 5/8 | • 10 |

| SYMBOL | DESC. |
|--------|-----------|
| S | SUPPLY |
| D | DELIVERY |
| C | CONTROL |
| E | EXHAUST |
| R | RESERVOIR |

- NOTES:
- SINGLE LINES DENOTE FIXED AIR LINES, DOUBLE LINES DENOTE FLEXIBLE HOSES.
 - BASED ON DRAWING 35781-3427

35781-3454
PRINT ISSUE DATE 10/97

| COMP. NO. | DESCRIPTION | SIZE | MATERIAL |
|---|--|---------|---------------------------|
| WV | WESTERN STAR TRUCKS INC. COMPUTER GRAPHICS RED OMA, S.C. | | |
| TOLERANCES (UNLESS NOTED): | | BY | DATE |
| | | DWN RJS | 25NOV96 |
| | | CKD | |
| | | APVD | |
| | | ECO | 88999 |
| | | SCALE | NTS |
| THIS DRAWING IS THE PROPERTY OF WESTERN STAR TRUCKS INC. IT IS TO BE USED ONLY FOR THE PURPOSES SPECIFIED HEREIN. IT IS NOT TO BE REPRODUCED OR TRANSMITTED IN ANY FORM OR BY ANY MEANS, ELECTRONIC OR MECHANICAL, INCLUDING PHOTOCOPYING, RECORDING, OR BY ANY INFORMATION STORAGE AND RETRIEVAL SYSTEM. | | | |
| APPLICATION PART NO. SCHEMATIC-TURNER HLM SERIES PUSHER | | | MR NO. 1328 35781-3454 |



| LINE SIZE LEGEND | | |
|------------------|------|------|
| SYMBOL | SIZE | # |
| △ A | 1/4 | # 4 |
| △ B | 3/8 | # 6 |
| △ C | 1/2 | # 8 |
| △ D | 5/8 | # 10 |
| | | |
| | | |
| | | |
| | | |

| PORT LEGEND | |
|-------------|-----------|
| SYMBOL | DESC. |
| S | SUPPLY |
| D | DELIVERY |
| C | CONTROL |
| E | EXHAUST |
| R | RESERVOIR |
| | |
| | |
| | |

- NOTES:
1. SINGLE LINES DENOTE FIXED AIR LINES, DOUBLE LINES DENOTE FLEXIBLE HOSES.
 2. BASED ON DRAWING 35781-3454, WHICH WAS BASED ON DRAWING 35781-3427

35781-3459
 PRINTED DATE
 NEW

| COMP. NO. | DESCRIPTION | SIZE | MATERIAL |
|---|--|-------|---------------|
| | WESTERN STAR TRUCKS INC. COMPUTER GRAPHICS KELOWNA, B.C. | | |
| TOLERANCES UNLESS NOTED: | | | |
| MACHINING | ± .02 INCH | DWN | TJJ 07-Jan-00 |
| HOLE CENTERS | ± .02 INCH | CRD | |
| HOLE DIAMETERS | ± .02 INCH | APVD | SER 19-Jan-00 |
| LINEAR | ± .06 INCH | ECO | 107174-2 |
| ANGULAR | ± 1/2° | SCALE | DRAWING SCALE |
| <small>THIS DOCUMENT CONTAINS PROPRIETARY INFORMATION AND IT SHALL NOT BE USED OR REPRODUCED OR IN ANY MANNER DISCLOSED IN WHOLE OR IN PART WITHOUT THE WRITTEN CONSENT OF WESTERN STAR TRUCKS INC., KELOWNA, BC.</small> | | | |
| SCHEMATIC - TAG | | | M/REF 1328 |
| WATSON & CHALIN | | | 35781-3459 |