

REMOVE ALL SHARP EDGES IF IN DOUBT ASK DO NOT SCALE DRAWING CAST, STAMP OR STENCIL PART NUMBER IN SUITABLE LOCATION ORIGINAL CREATED ON WST! SOLID MODELING WORKSTATION

AIR RIDE SUSPENSION SCHEMATICS



WESTERN STAR TRUCKS INC.
COMPUTER GRAPHICS KELOWNA, B.C.

DIVIDER
PAGE

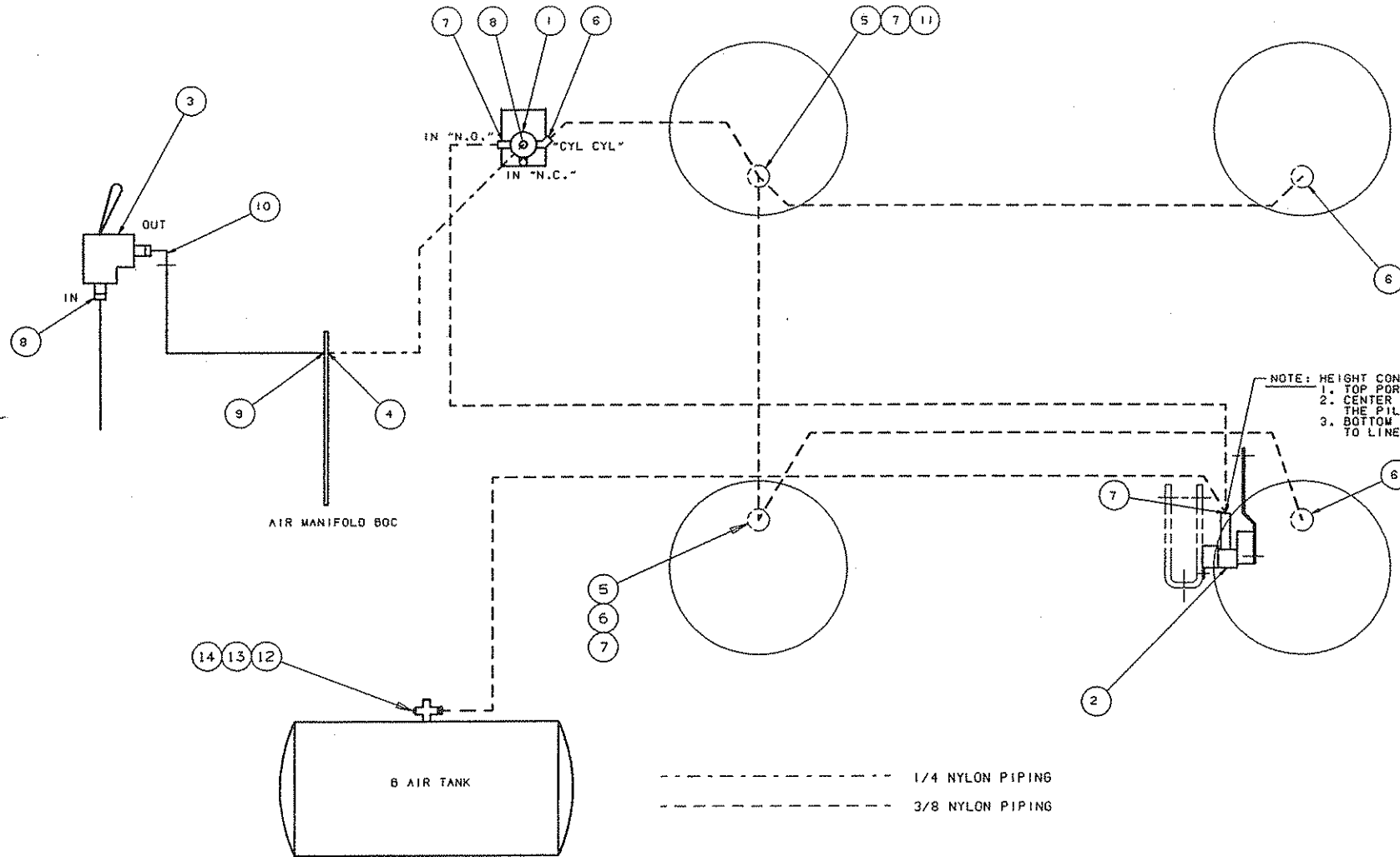
REV. NEW

SHT 1
OF 1

||FOLD

DO NOT SCALE DRAWING IF IN DOUBT, ASK REMOVE ALL SHARP EDGES ORIGINAL CREATED ON WEST COMPUTER GRAPHICS

ENG	CHG	CHANGE	BY	DATE	CKD	APVD
35291	A	1/4 WAS INCORRECTLY NOTED AS 3/8; CORRECT P/L FOR FITTINGS	KAB	5MARS93		
40857	B	ITEM -6 DELETED FROM PILOT VALVE, PARTS NOW SUPPLIED BY NEWAY; ITEM -5 QUANTITY WAS 5	CAS	23MAY95		
82871	C	QWG REVISED TO INDICATE STD 3/8 LINES, 1/4 LINE ONLY FOR PILOT	MJT	29JAN96		



NOTE: HEIGHT CONTROL VALVE PLUMBING
 1. TOP PORT IS EXHAUST PORT.
 2. CENTER PORT IS CONNECTED TO THE PILOT VALVE.
 3. BOTTOM PORT IS CONNECTED TO LINE PRESSURE (BOC MANIFOLD).

NOTE:
 3/8 NYLON PIPING TO BE USED FOR ALL SUPPLY AND DELIVERY LINES

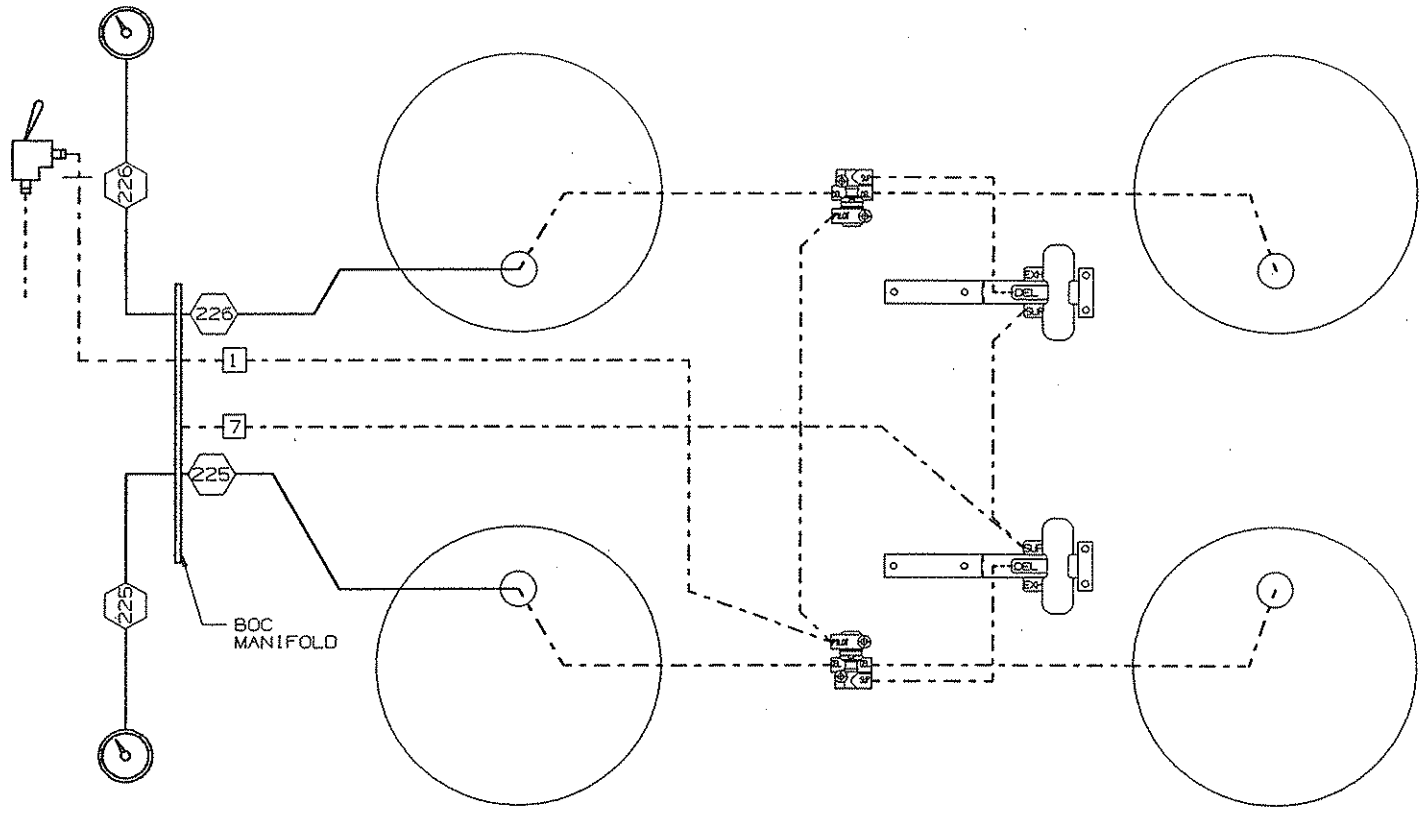
14	SO. HEAD PLUG	B/B NPT	6231-3403
13	90° ELBOW	1/8NPT	B/B NYL5170-0008
12	PRESS PROT VLV	B/B NPT	72807-3402
11	45° ELBOW	1/4NPT	B/B NYL5291-0001
10	90° ELBOW	1/8NPT	1/4 NYL5290-0001
9	CONN 1/4 NPT	1/4 NYL	5170-0002
8	CONN 1/8 NPT	1/4 NYL	5170-0001
7	CONN 1/4 NPT	B/B NYL	5170-0005
6	90° ELBOW	1/4NPT	B/B NYL5290-0005
5	TEE-BRANCH	B/B NYL	6490-3402
4	45° ELBOW	1/4NPT	1/4 NYL5291-0002
3	VALVE REDDOT	1/8 NPT	72403-3402
2	HT CONTROL VALVE	PART OF KIT	35701-3407
1	PILOT VALVE	PART OF KIT	35701-3407

COMP. NO.	DESCRIPTION	SIZE	MATERIAL
 WESTERN STAR TRUCKS INC. COMPUTER GRAPHICS			
TOLERANCES (UNLESS NOTED)			
MACHINING	±.02 IN.	OWN TWB	2JUNE88
HOLE CNTRS	±.02 IN.	CKD	
HOLE DIAM	±.02 IN.	APVD/RMP	2JUNE88
LINEAR	±.03 IN.	END	26953
ANGULAR	±1/2°	SCALE	QUARTER
THIS DOCUMENT CONTAINS PROPRIETARY INFORMATION AND IS NOT TO BE REPRODUCED OR TRANSMITTED IN ANY FORM OR BY ANY MEANS, ELECTRONIC OR MECHANICAL, INCLUDING PHOTOCOPYING, RECORDING, OR BY ANY INFORMATION STORAGE AND RETRIEVAL SYSTEM.			
SCHEMATIC AIR CONT			MR NO. 2210
NEWAY AB-240-S 357B1-3415			

357B1-3415
 PRINT ISSUE DATE 08/96

CAST, STAMP OR STENCIL PART NUMBER IN SUITABLE LOCATION DO NOT SCALE DRAWING IF IN DOUBT, ASK REMOVE ALL SHARP EDGES ORIGINAL CREATED ON WESTI COMPUTER GRAPHICS

ENO	CHG	CHANGE	BY	DATE	CKD	APVD
41067	A	ADDED 225 AND 226 LABELS	MAR	13 JUN 95		



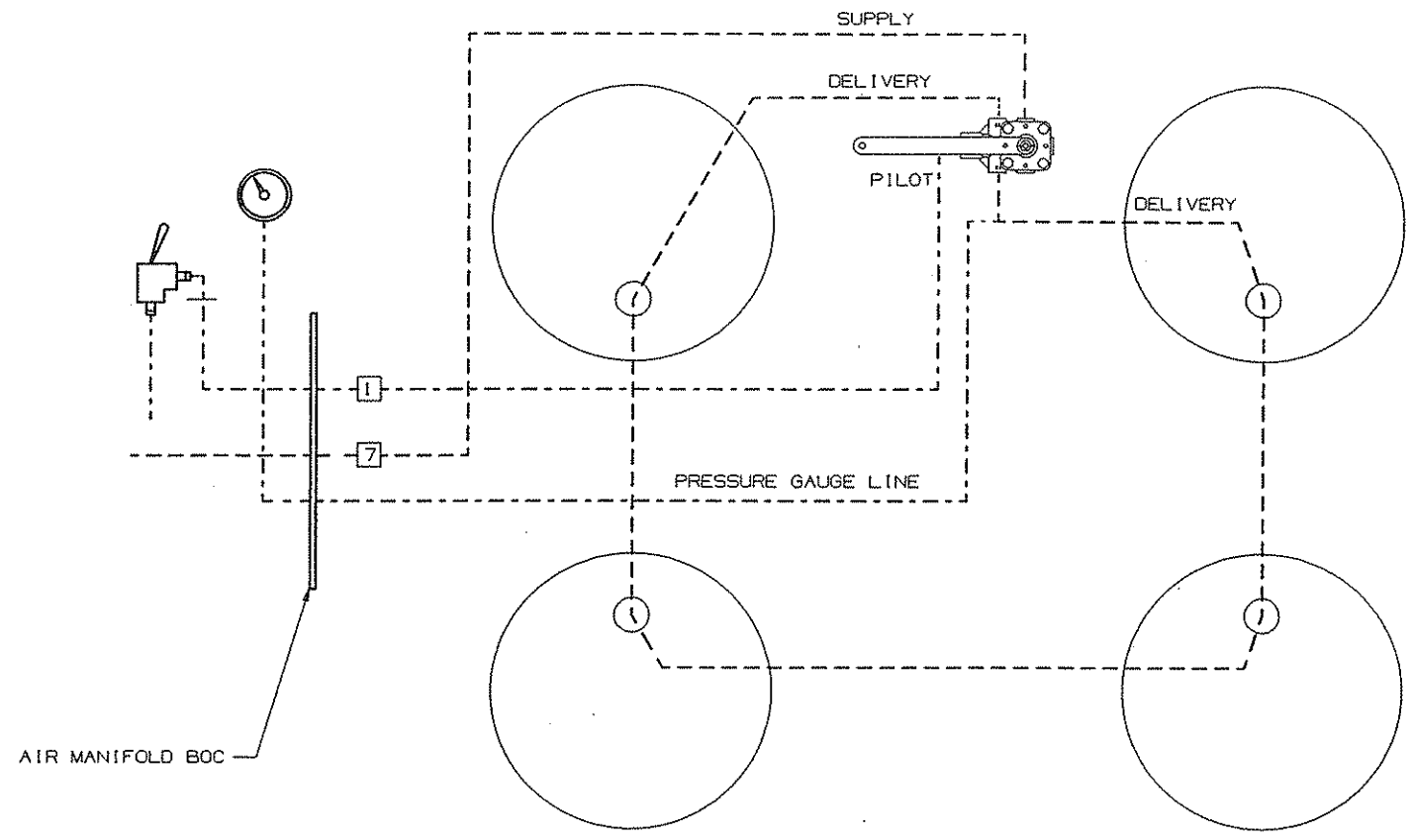
357B1-3424
 PRINT ISSUE DATE CHG
 A

- NOTES:
1. DUAL GAUGE APPLICATION SHOWN, FOR SINGLE GAUGE, TEE OFF RHS FRONT AIRBAG.

SINGLE OR DUAL GA 357B1-3424 X APPLICATION PART NO.	-1	SCHEMATIC				
	COMP. NO.	DESCRIPTION	SIZE	MATERIAL		
	WESTERN STAR TRUCKS INC. COMPUTER GRAPHICS KELOWNA, B.C.					
	TOLERANCES (UNLESS NOTED)			BY	DATE	
	MACHINING	± IN.	DWN	BGK	12MAR92	
	HOLE CNTRS	± IN.	CKD			
	HOLE DIAM	± IN.	APVD	XX	16MAR92	
	LINEAR	± IN.	ENO	33841		
	ANGULAR	± °	SCALE N/A			
	<small>THIS DOCUMENT CONTAINS PROPRIETARY INFORMATION AND IT SHALL NOT BE USED OR REPRODUCED OR ITS CONTENTS DISCLOSED IN WHOLE OR IN PART WITHOUT THE PRIOR WRITTEN CONSENT OF WESTERN STAR TRUCKS INC., KELOWNA, B.C.</small>					
SCHEM-NEWAY AIR PRESSURE MONITOR				MR NO.	2210	
				357B1-3424		

CAST, STAMP OR STENCIL PART NUMBER IN SUITABLE LOCATION DO NOT SCALE DRAWING IF IN DOUBT, ASK REMOVE ALL SHARP EDGES ORIGINAL CREATED ON WSTI COMPUTER GRAPHICS

ENO	CHG	CHANGE	BY	DATE	CKD	APVD
83182	A	NEW RIDE HIGHT CNTL VLV AND AIR LINES	MJT	14FEB96		



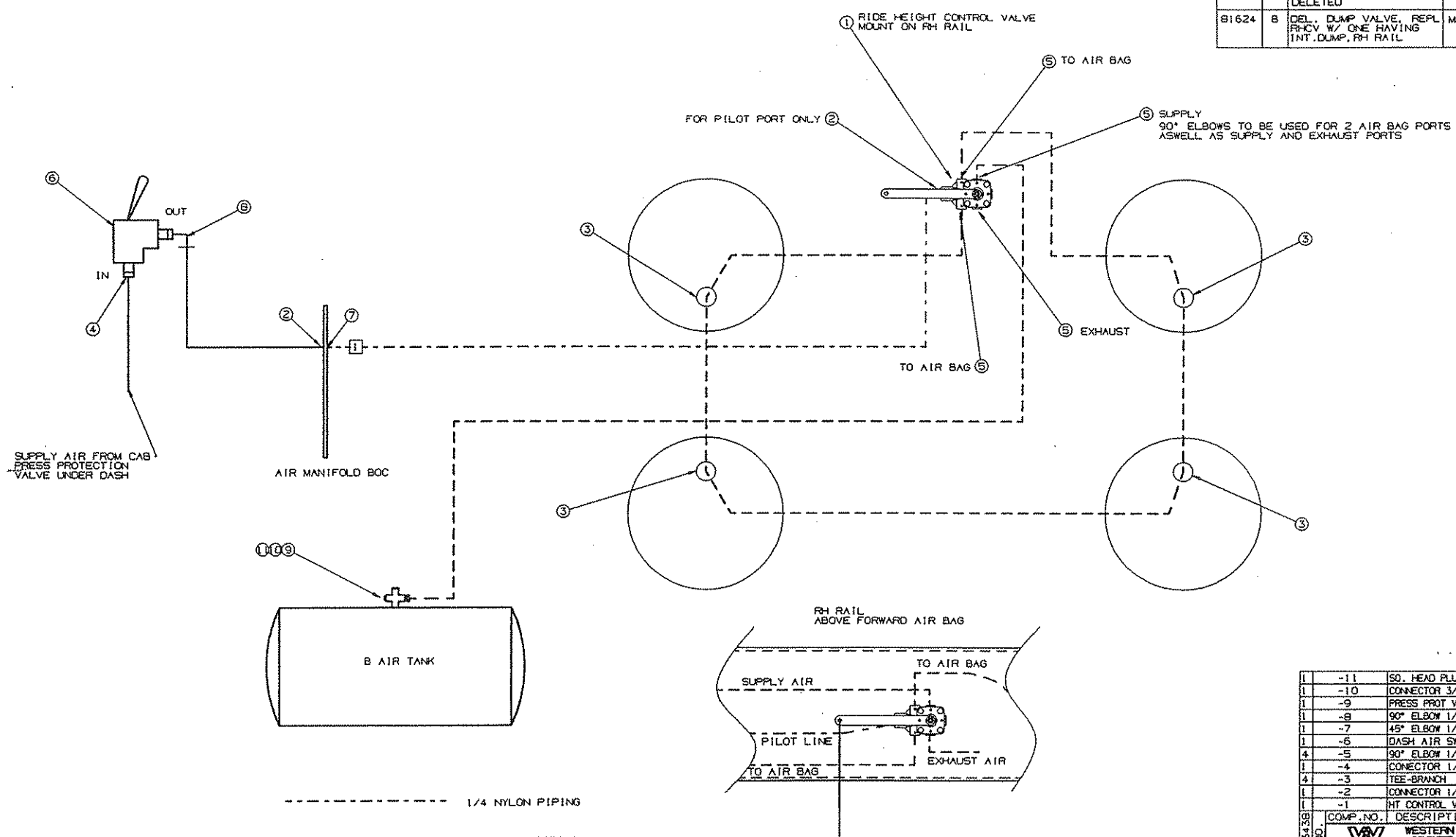
357B1-3425
PRINT ISSUE DATE CHG
A

- NOTES:
- 1. TEE PRESSURE GAUGE LINE INTO BOTTOM DELIVERY LINE
 - 1/4" NYLON TUBING
 - 3/8" NYLON TUBING

SINGLE GAUGE APPLICATION PART NO. 357B1-3425 X	-1	SCHEMATIC		SIZE	MATERIAL	
	COMP. NO.	DESCRIPTION	SIZE	MATERIAL		
	WESTERN STAR TRUCKS INC. COMPUTER GRAPHICS KELOWNA, B.C.					
	TOLERANCES (UNLESS NOTED)				BY	DATE
	MACHINING	±	IN.	OWN	BGK	12MAR91
	HOLE CNTRS	±	IN.	CKD		
	HOLE DIAM	±	IN.	APVD		
	LINEAR	±	IN.	ENO	33841	
	ANGULAR	±	°	SCALE	N/A	
	THIS DOCUMENT CONTAINS PROPRIETARY INFORMATION AND IT SHALL NOT BE USED OR REPRODUCED OR ITS CONTENTS DISCLOSED IN WHOLE OR IN PART WITHOUT THE PRIOR WRITTEN CONSENT OF WESTERN STAR TRUCKS INC., KELOWNA, B.C.					
SCHEM-HEND AIR PRESSURE MONITOR				MR NO.	2110	
				357B1-3425		

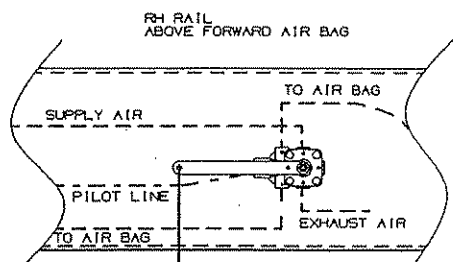
DO NOT SCALE DRAWING IF BY COURT, AND ABOVE ALL SWAMP EDGES ORIGINAL CREATED ON WESTI COMPUTER GRAPHICS

END	CHG	CHANGE	BY	DATE	CKD	APVD
39341	A	-10 WAS 392443, -11 WAS 426584, -12 WAS 9055081, -13 WAS -15, P/N'S 72807-3401 AND 5290-0005 DELETED	CAS	21NOV94		
81624	B	DEL. DUMP VALVE, REPL RHCV W/ ONE HAVING INT. DUMP, RH RAIL	MJT	29NOV95		



----- 1/4 NYLON PIPING
 ----- 3/8 NYLON PIPING

NOTE:
 3/8" NYLON PIPING TO BE USED FOR ALL SUPPLY AND DELIVERY LINES.



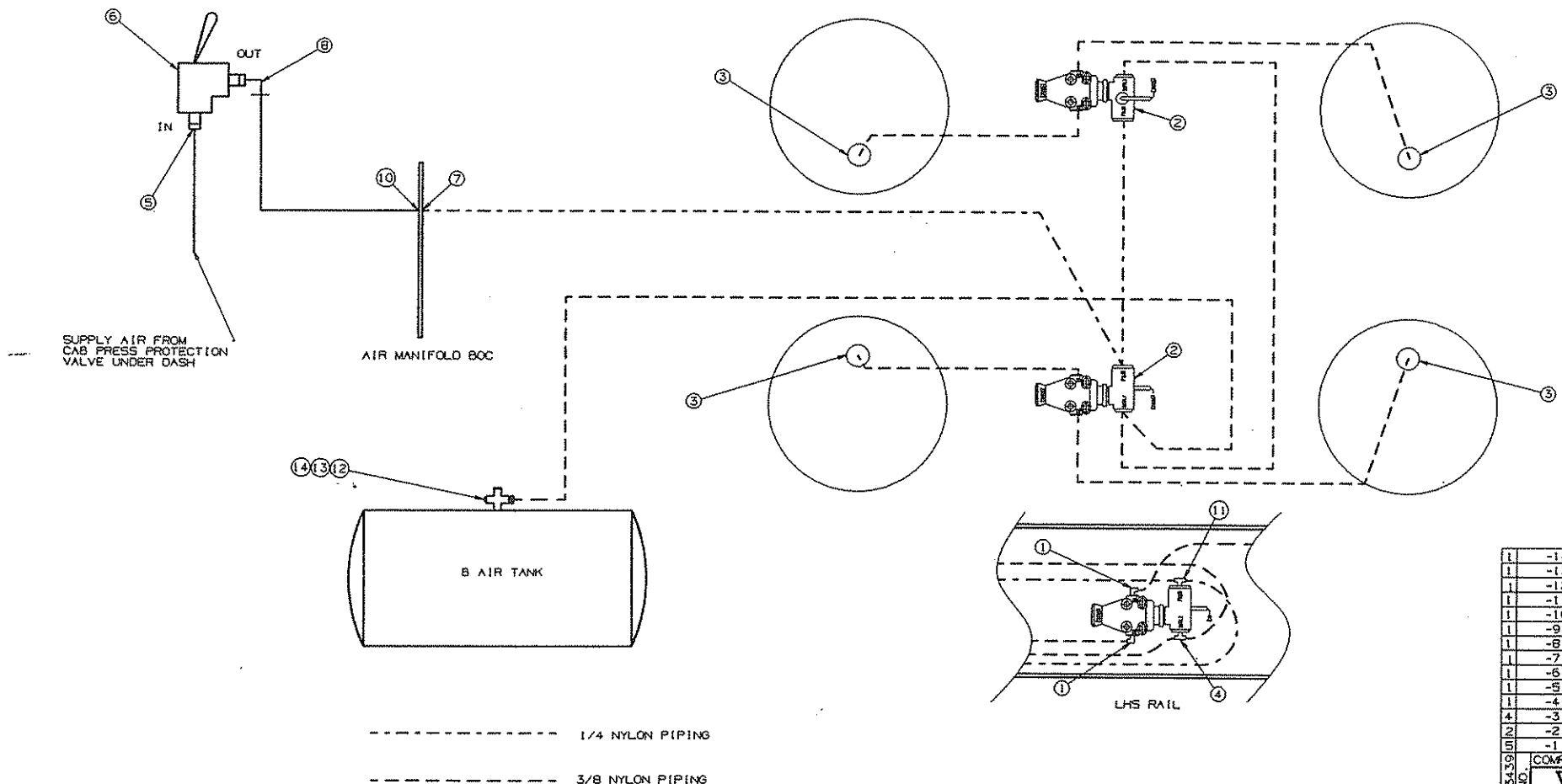
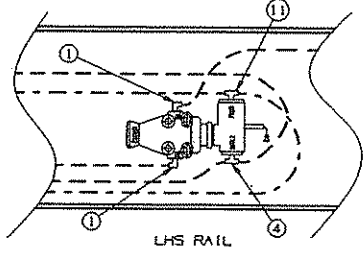
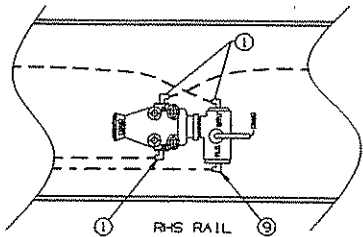
CONTROL LINKAGE
 REFER TO INSTALLATION
 350A1-3536

357B1-3438
 PRINT ISSUE DATE 11/29/95

11	-11	SO. HEAD PLUG	3/8NPT	6231-3403
11	-10	CONNECTOR 3/8NYL	3/8NPT	5170-0008
11	-9	PRESS PROT VLV	3/8NPT	72807-3402
11	-8	90° ELBOW 1/8 NPT	1/4 NYL	5290-0001
11	-7	45° ELBOW 1/4 NPT	1/4 NYL	5291-0002
11	-6	DASH AIR SWITCH	1/8 NPT	72403-3402
11	-5	90° ELBOW 1/4 NPT	3/8 NYL	5291-0005
11	-4	CONNECTOR 1/8NPT	3/8 NYL	5170-3407
11	-3	TEE-BRANCH	3/8 NYL	6490-3402
11	-2	CONNECTOR 1/4NPT	1/4 NYL	5170-0002
11	-1	HT CONTROL VALVE		66007-3403
COMP. NO. DESCRIPTION SIZE MATERIAL				
WESTERN STAR TRUCKS, INC. COMPUTER GRAPHICS KILGONA, S.C.				
TOLERANCES (UNLESS NOTED) BY DATE				
MACHINING ±.02 IN. DWN JVO 29SEP94				
HOLE CNTRS ±.02 IN. CKD				
HOLE DIAM ±.02 IN. APVD				
LINEAR ±.03 IN. ENO T71050				
ANGULAR ±1/2° SCALE EIGHTH				
APPLICATOR				
SCHEM-HT. CONTROL MR NO. 2210				
HENDRICKSON 357B1-3438				

DO NOT SCALE DRAWING IF IN DOUBT, ASK REMOVE ALL SHARP EDGES ORIGINAL CREATED ON WEST COMPUTER GRAPHICS

END	CHG	CHANGE	BY	DATE	CKD	APVD
39341	A	-12 WAS 392443, -13 WAS 426584, -14 WAS 9055051, -15 (72807-3401) DELETED, -1 WAS 6	CAS	21NOV94		



----- 1/4 NYLON PIPING
 ----- 3/8 NYLON PIPING

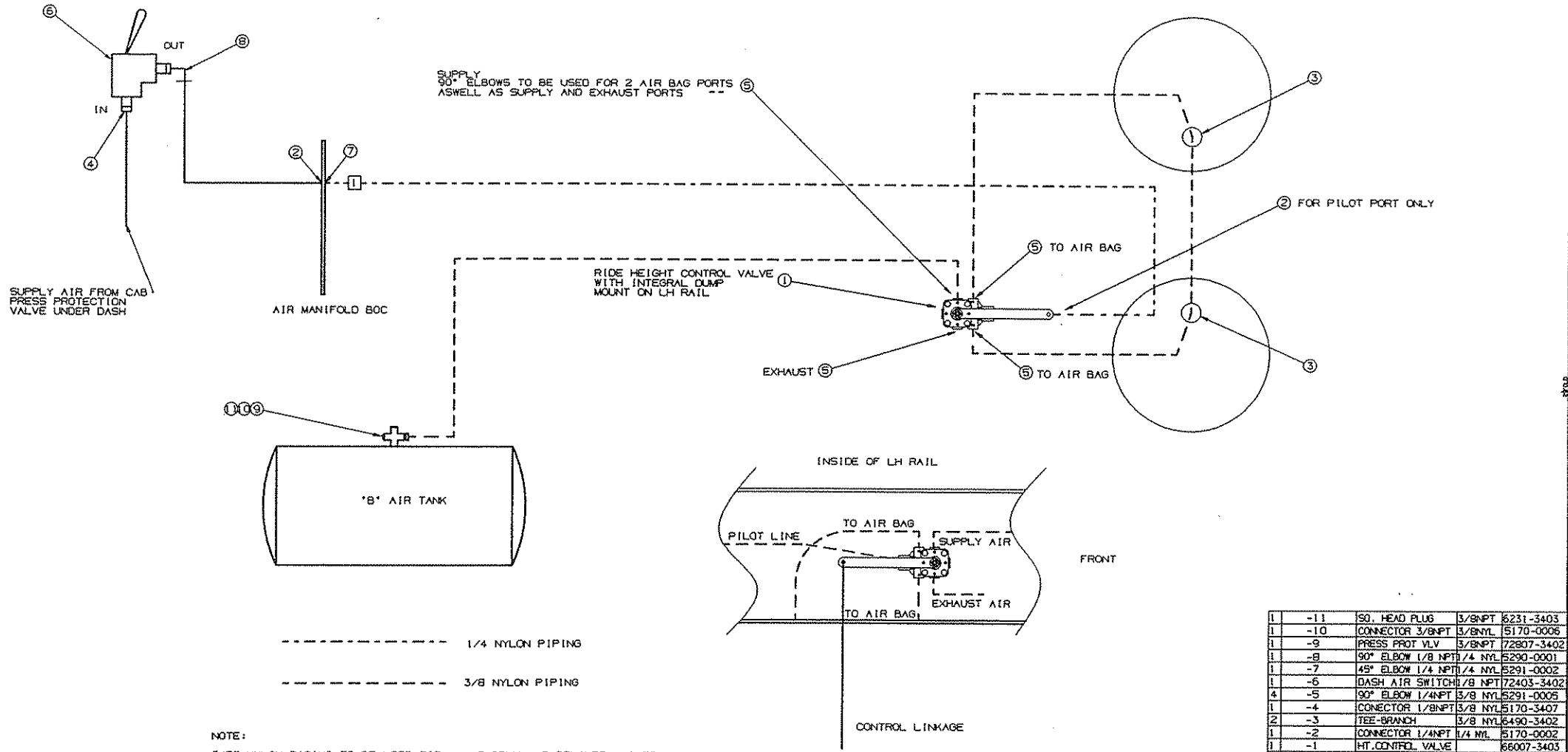
NOTE:
 3/8" NYLON PIPING TO BE USED FOR ALL SUPPLY AND DELIVERY LINES.
 1/4" NYLON PIPING FOR PILOT LINES ONLY.

1	-14	SO. HEAD PLUG	3/8 NPT	6231-3403
1	-13	CONNECTOR 3/8NPT	3/8 NYL	5170-0006
1	-12	PRESS PROT VLV	3/8 NPT	72807-3402
1	-11	TEE 1/4 NPT	1/4 NYL	6490-3401
1	-10	CONNECTOR 1/4NPT	1/4 NYL	5170-0002
1	-9	CONNECTOR 1/4NPT	1/4 NYL	5290-0002
1	-8	90° ELBOW 1/8 NPT	1/4 NYL	5290-0001
1	-7	45° ELBOW 1/4 NPT	1/4 NYL	5291-0002
1	-6	DASH AIR SWITCH	1/8 NPT	72403-3402
1	-5	CONNECTOR 1/8NPT	1/4 NYL	5170-0001
1	-4	TEE 1/4 NPT	3/8 NYL	6490-3402
4	-3	CONNECTOR 1/4NPT	3/8 NYL	5170-0005
2	-2	HT CONTROL VALVE PART OF KIT	35701-3412	
1	-1	90° ELBOW 1/4NPT	3/8 NYL	5290-0005
COMP. NO. DESCRIPTION SIZE MATERIAL				
WESTERN STAR TRUCKS INC. COMPUTER GRAPHICS KILONA, B.C.				
TOLERANCES (UNLESS NOTED)				
MACHINING		±.02 IN.	DWN	JVO 13OCT94
HOLE CNTRS		±.02 IN.	CKD	
HOLE DIAM		±.02 IN.	APVD	
LINEAR		±.03 IN.	JENO	39101
ANGULAR		±1/2°	SCALE	NTS
SCHEM-HT. CONTROL				
NEWAY AD SUSP				
				MR NO. 2210
				357B1-3439

357B1-3439
 PRINT ISSUE DATE 10/8

DO NOT SCALE DRAWING IF IN DOUBT, REFER ABOVE ALL SHARP EDGES ORIGINAL CREATED ON WESTI COMPUTER GRAPHICS

ENO	CHG	CHANGE	BY	DATE	CKD	APVD
B1624	A	REPLACED RIDE HEIGHT CONTROL VALVE	MJT	11DEC95		

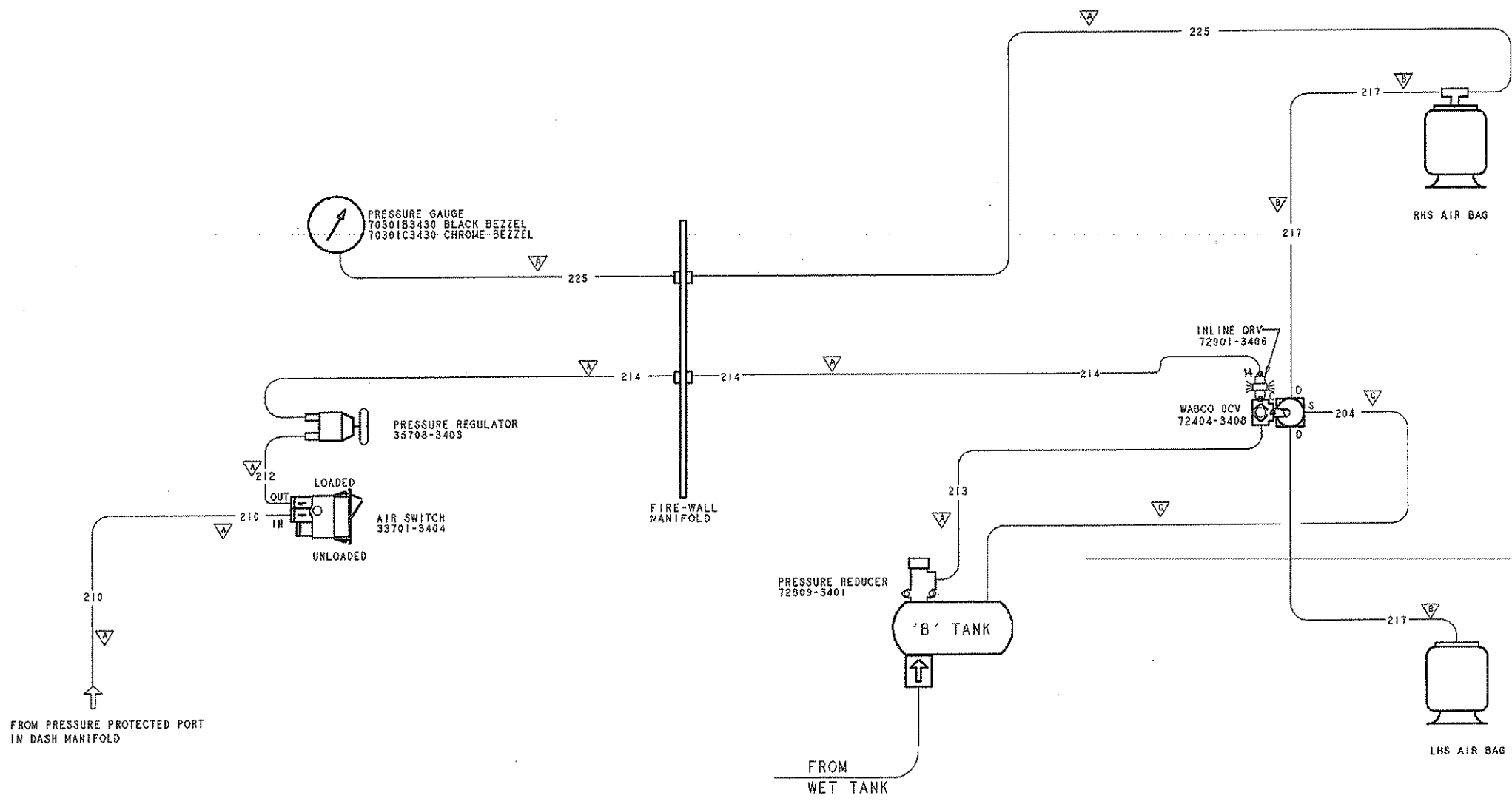


NOTE:
3/8" NYLON PIPING TO BE USED FOR ALL SUPPLY AND DELIVERY LINES.

----- 1/4 NYLON PIPING
----- 3/8 NYLON PIPING

357B1-3440
PRINT ISSUE DATE 10/95

1	-11	SO. HEAD PLUG	3/8NPT	6231-3403
1	-10	CONNECTOR 3/8NPT	3/8NYL	5170-0006
1	-9	PRESS PROT VLV	3/8NPT	72807-3402
1	-8	90° ELBOW 1/8 NPT	1/4 NYL	5290-0001
1	-7	45° ELBOW 1/4 NPT	1/4 NYL	5291-0002
1	-6	DASH AIR SWITCH	1/8 NPT	72403-3402
4	-5	90° ELBOW 1/4NPT	3/8 NYL	5291-0006
1	-4	CONNECTOR 1/8NPT	3/8 NYL	5170-3407
2	-3	TEE-BRANCH	3/8 NYL	6490-3402
1	-2	CONNECTOR 1/4NPT	1/4 NYL	5170-0002
1	-1	HT CONTROL VALVE		66007-3403
COMP. NO. DESCRIPTION SIZE MATERIAL				
WESTERN STAR TRUCKS INC. COMPUTER GRAPHICS REGINA, S.C.				
TOLERANCES (UNLESS NOTED)				
MACHINING ± IN.		DWN	CAS	28NOV94
HOLE CNTRS ± IN.		CKD		
HOLE DIAM ± IN.		APVD		
LINEAR ± IN.		END	39341	
ANGULAR ±°		SCALE	EIGHTH	
This document contains proprietary information and it shall not be used for any other purpose without the express written consent of Western Star Trucks Inc.				
SCHEM-HT. CONTROL				MR NO. 2210
HAS-210/230				357B1-3440



FROM PRESSURE PROTECTED PORT
 IN DASH MANIFOLD

LINE SIZE LEGEND		
SYMBOL	SIZE	
A	1/4	# 4
B	3/8	# 6
C	1/2	# 8
D	5/8	# 10

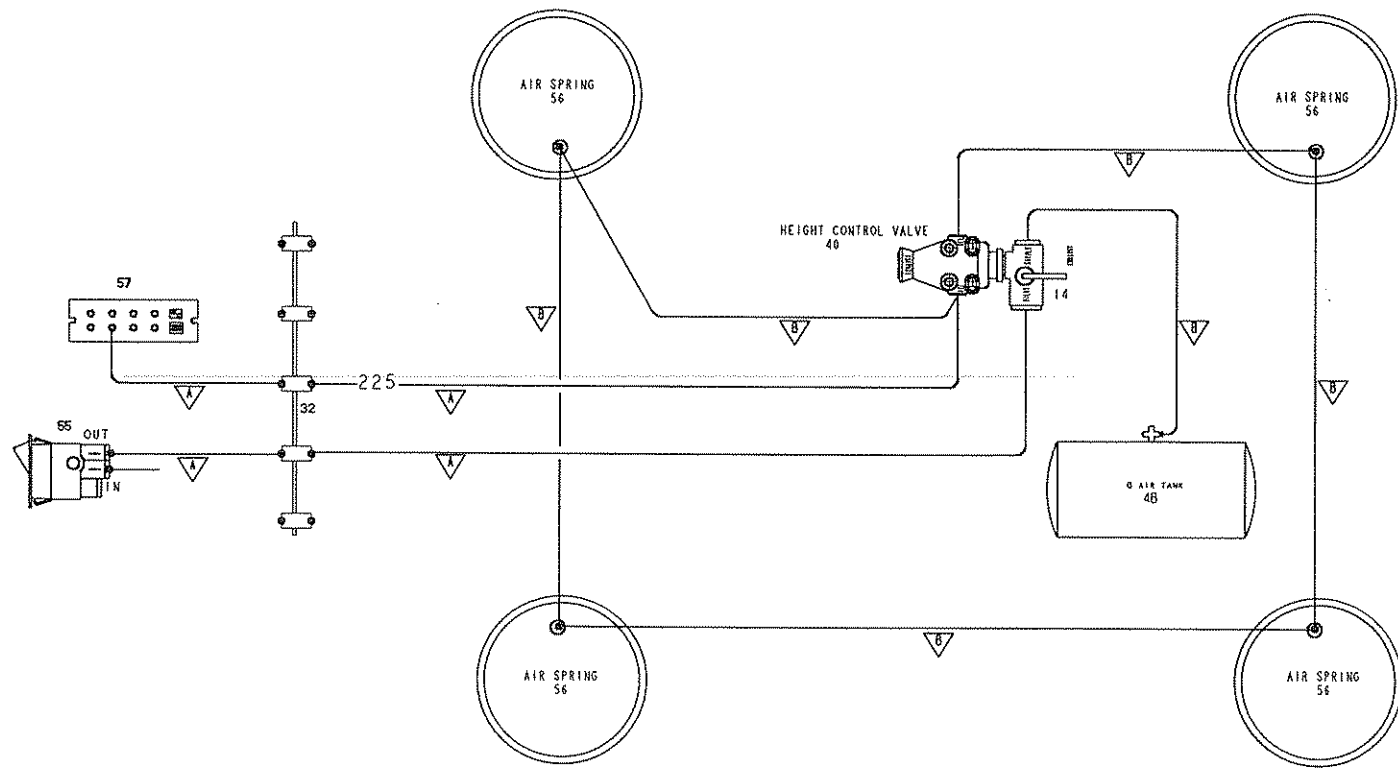
PORT LEGEND	
SYMBOL	DESCRIPTION
S	SUPPLY
D	DELIVERY
C	CONTROL
E	EXHAUST
R	RESERVOIR

- NOTES:
1. SINGLE LINES DENOTE FIXED AIR LINES.
 DOUBLE LINES DENOTE FLEXIBLE HOSES.
 2. DASHED LINES INDICATE ELECTRICAL.

35701-3453
 PRINT ISSUE DATE
 CDR A

AIR SCHEMATIC			
COMP. NO.	DESCRIPTION	SIZE	MATERIAL
WESTERN STAR TRUCKS INC.			
COMPUTER GRAPHICS KELOWNA, B.C.			
TOLERANCES UNLESS NOTED:			
MACHINING	± .02 INCH	DWN	BY DATE
HOLE CENTERS	± .02 INCH	CRD	
HOLE DIAMETERS	± .02 INCH	APVD	FWS 28AUG96
LINEAR	± .05 INCH	ECO	87311
ANGULAR	± 1/2°	SCALE	NONE
THIS DOCUMENT CONTAINS PROPRIETARY INFORMATION AND IT SHALL NOT BE USED OR REPRODUCED OR ITS CONTENTS DISCLOSED IN WHOLE OR IN PART WITHOUT THE PRIOR WRITTEN CONSENT OF WESTERN STAR TRUCKS INC., KELOWNA, BC			
SCHEM - SUSPENSION			MR NO 2218
PRESSURE CONTROL			35701-3453 SH1 OF 1

4B	RESERVOIR 'B'
14	DUMP VALVE
32	CAB TO CHASSIS MANIFOLD
40	CONTROL VALVE
55	AIR SWITCH
56	AIR SPRING
57	PX MODULE (PRESSURE/VACUUM TRANSDUCER)



AIR SYSTEM REFERENCE DRAWINGS	
AIR SYSTEM PIPING SECTION	SEE DRAWING CALLUP IN ROW'S WITHIN THESE MASTER REFERENCES
CHASSIS PIPING	2328 'B'
PARK BRAKE & SERVICE BRAKE DROP LINES	2328 'C'
TRACTOR PROTECTION VALVE AND TRAILER CONN PIPING	2288 'A' & 'B'
SAMPLE COMPLETE SCHEMATICS	2378 'A'

LINE SIZE LEGEND		
▽	NYLON	HOSE
▽	1/4	# 4
▽	3/8	# 6
▽	1/2	# 8
▽	5/8	# 10
▽	3/4	# 12
▽	3/4	COPPER
▽	1/8	

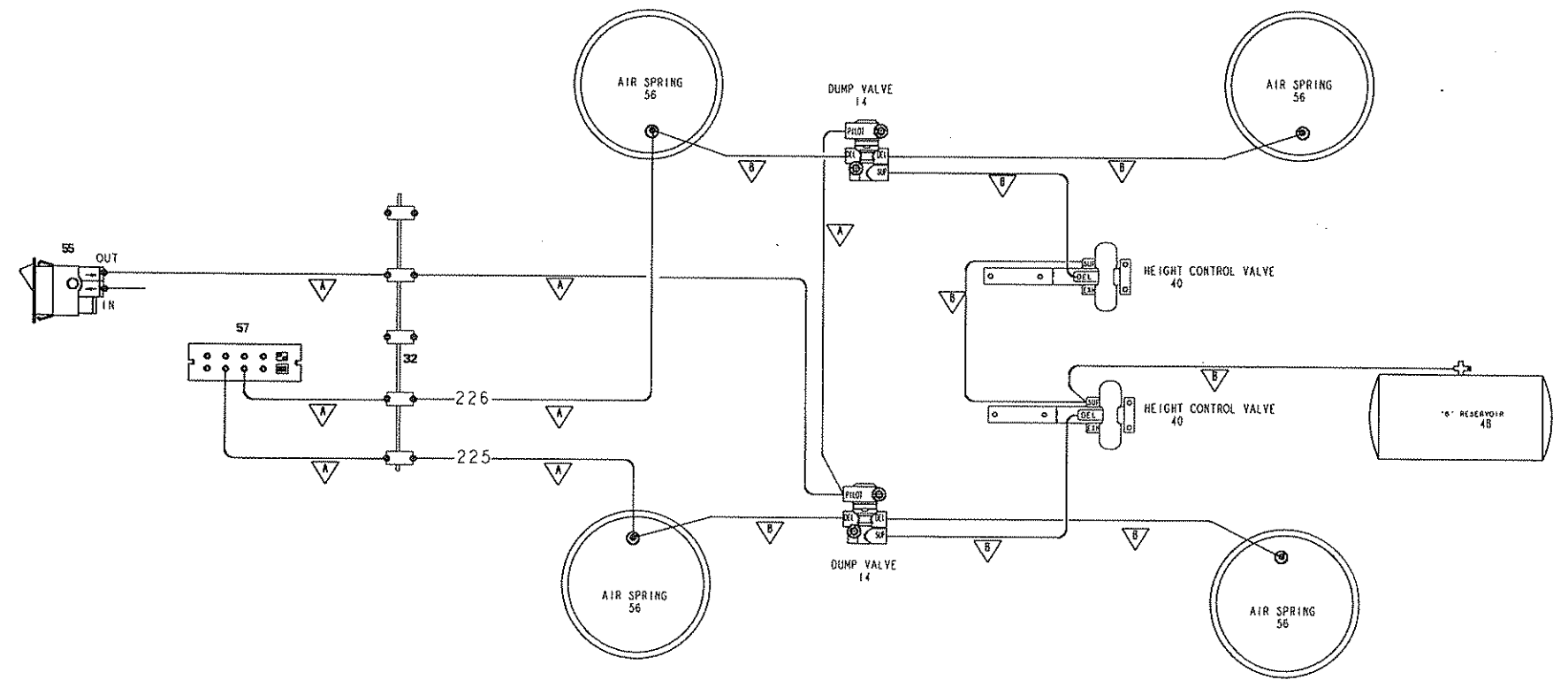
PORT LEGEND	
SYMBOL	DESC.
S	SUPPLY
D	DELIVERY
C	CONTROL
E	EXHAUST
R	RESERVOIR
A	ACCESSORY

- NOTES:
1. SINGLE LINES DENOTE FIXED AIR LINES (NYLON, BRAIDED HOSE, COPPER).
 2. DOUBLE LINES DENOTE FLEXIBLE DROP LINES.
 3. THIS SCHEMATIC IS SPECIFIC TO THE STAR GAUGE PACKAGE. FOR TELEFLEX INSTALLATION SEE 357B1-3425.

REV.	COMP. NO.	DESCRIPTION	SIZE	MATERIAL
		WESTERN STAR TRUCKS INC. COMPUTER GRAPHICS MELOWNA, B.C.		
TOLERANCES UNLESS NOTED:		BY DATE		
MACHINING	±	DWN	FWS	06MAR00
HOLE CENTERS	±	CKD		
HOLE DIAMETERS	±	APVD	SER	24APR00
LINEAR	±	ECCO		108773-9
ANGULAR	±	SCALE		NONE
<small>THIS DOCUMENT CONTAINS PROPRIETARY INFORMATION AND IT SHALL NOT BE REPRODUCED OR IN ANY MANNER DISCLOSED TO WHOMSOEVER WITHOUT THE WRITTEN CONSENT OF WESTERN STAR TRUCKS INC., MELOWNA, BC.</small>				
AIR SYSTEM PIPING HENDRICKSON SUSPENSION				NR NO. 2328 357B1-3463 SHT 1 OF 1

357B1-3463
 PRINTED ON DATE
 357B1-3463 SHT 1 OF 1

NO.	DESCRIPTION
48	RESERVOIR 'B'
14	DUMP VALVE
32	CAB TO CHASSIS MANIFOLD
40	CONTROL VALVE
55	AIR SWITCH
56	AIR SPRING
57	PX MODULE (PRESSURE/VACUUM TRANSDUCER)



AIR SYSTEM REFERENCE DRAWINGS	
AIR SYSTEM PIPING SECTION	SEE DRAWING CALLUP IN BOM'S WITHIN THESE MASTER REFERENCES
CHASSIS PIPING	2328 'B'
PARK BRAKE & SERVICE BRAKE DROP LINES	2328 'C'
TRACTOR PROTECTION VALVE AND TRAILER CONN PIPING	2288 'A' & 'B'
SAMPLE COMPLETE SCHEMATICS	2378 'A'

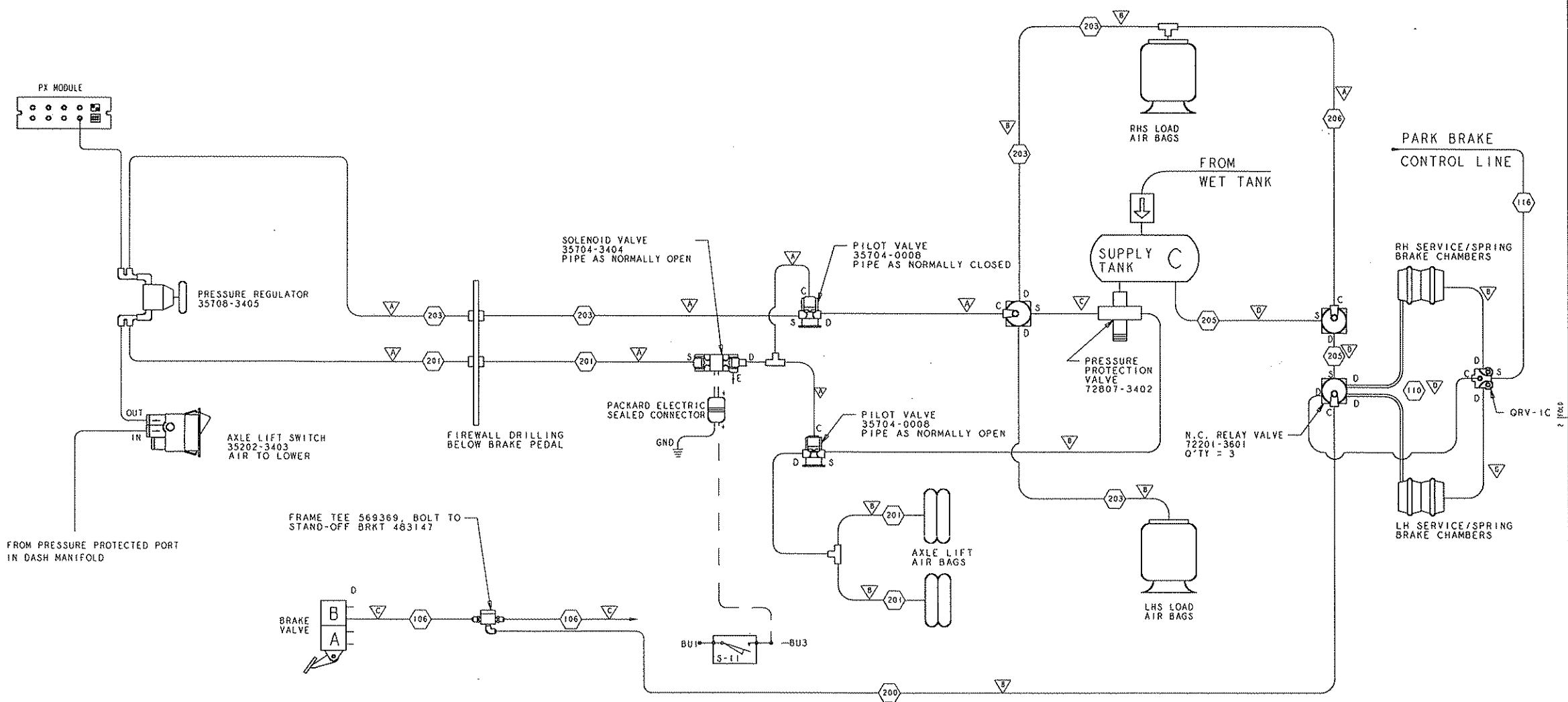
LINE SIZE LEGEND		
SYMBOL	NYLON	HOSE
A	1/4	# 4
B	3/8	# 6
C	1/2	# 8
D	5/8	# 10
E	3/4	# 12
F	3/4 COPPER	
G	1/8	-

PORT LEGEND	
SYMBOL	DESC.
S	SUPPLY
D	DELIVERY
C	CONTROL
E	EXHAUST
R	RESERVOIR
A	ACCESSORY

- NOTES:
- SINGLE LINES DENOTE FIXED AIR LINES (NYLON, BRAIDED HOSE, COPPER).
 - DOUBLE LINES DENOTE FLEXIBLE DROP LINES.
 - THIS SCHEMATIC IS SPECIFIC TO THE STAR GAUGE PACKAGE. FOR TELEFLEX INSTALLATION SEE 357B1-3424.

REV	COMP. NO.	DESCRIPTION	SIZE	MATERIAL
		WESTERN STAR TRUCKS INC. COMPUTER GRAPHICS KELOWNA, B.C.		
TOLERANCES UNLESS NOTED:		BY	DATE	
MACHINING	±	DWN	FWS	06MARG0
HOLE CENTERS	±	CKD		
HOLE DIAMETERS	±	APVD	SER	24APR00
LINEAR	±	ECO		106773-9
ANGULAR	±			SCALE
				ROSE
<small>THIS DOCUMENT CONTAINS PROPRIETARY INFORMATION AND IT SHALL NOT BE USED OR REPRODUCED OR ITS CONTENTS DISCLOSED IN WHOLE OR IN PART WITHOUT THE PRIOR WRITTEN CONSENT OF WESTERN STAR TRUCKS INC., KELOWNA, BC</small>				
APPLICATION PART NO.		MR NO. 2328		SHT 1
357B1-3462		357B1-3462		OF 1
PARTIAL TISSUE DRAWING				OF 1
NEW				OF 1

357B1-3462
PARTIAL TISSUE DRAWING
NEW



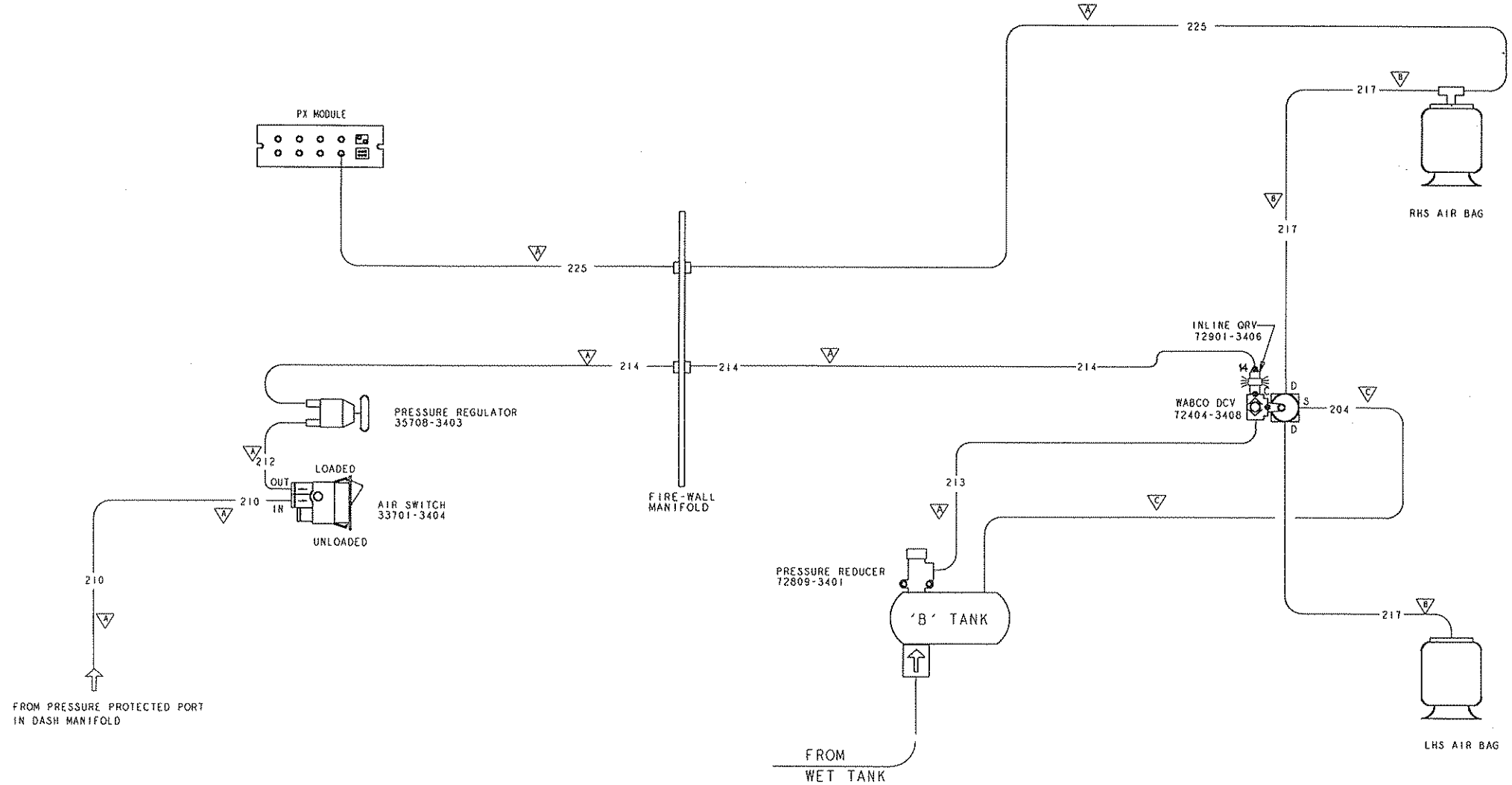
LINE SIZE LEGEND		
SYMBOL	NYLON	HOSE
A	1/4	# 4
B	3/8	# 6
C	1/2	# 8
D	5/8	# 10
E	3/4	# 12
F	3/4 COPPER	
G	1/8	-

PORT LEGEND	
SYMBOL	DESC.
S	SUPPLY
D	DELIVERY
C	CONTROL
E	EXHAUST
R	RESERVOIR
A	ACCESSORY

- NOTES:
1. SINGLE LINES DENOTE FIXED AIR LINES. (NYLON, BRAIDED HOSE, COPPER).
 2. DOUBLE LINES DENOTE FLEXIBLE DROP LINES.
 3. THIS SCHEMATIC IS SPECIFIC TO THE STAR GAUGE PACKAGE. FOR TELEFLEX INSTALLATION SEE 357B1-3451.
 4. AXLE WILL LIFT WHEN REVERSE GEAR IS ENGAGED. AXLE REMAINS DOWN AND LOADED WHEN PARK BRAKES ARE APPLIED.

357B1-3466
PRINT ISSUE DATE
NEW

TABOR APPLICATION	NEW	REV	WITH SPRING BRAKE CHAMBERS			
			COMP. NO.	DESCRIPTION	SIZE	MATERIAL
9274			WESTERN STAR TRUCKS INC. COMPUTER GRAPHICS KELOWNA, B.C.			
			TOLERANCES UNLESS NOTED:		BY	DATE
			MACHINING	± INCH DWN FMS	1	5MARGO
			HOLE CENTERS	± INCH CRD		
			HOLE DIAMETERS	± INCH APVD SER	2	4APR00
			LINEAR	± INCH ECO	106773-9	
			ANGULAR	±	SCALE	NONE
THIS DOCUMENT CONTAINS PROPRIETARY INFORMATION AND IT SHALL NOT BE USED OR REPRODUCED OR IN ANY MANNER DISCLOSED IN WHOLE OR IN PART WITHOUT THE PRIOR WRITTEN CONSENT OF WESTERN STAR TRUCKS INC., KELOWNA, BC						
AIR SYSTEM PIPING WATSON-CHALIN LIFT AXLES						MR NO. 1328
						357B1-3466 SH1 1 OF 1



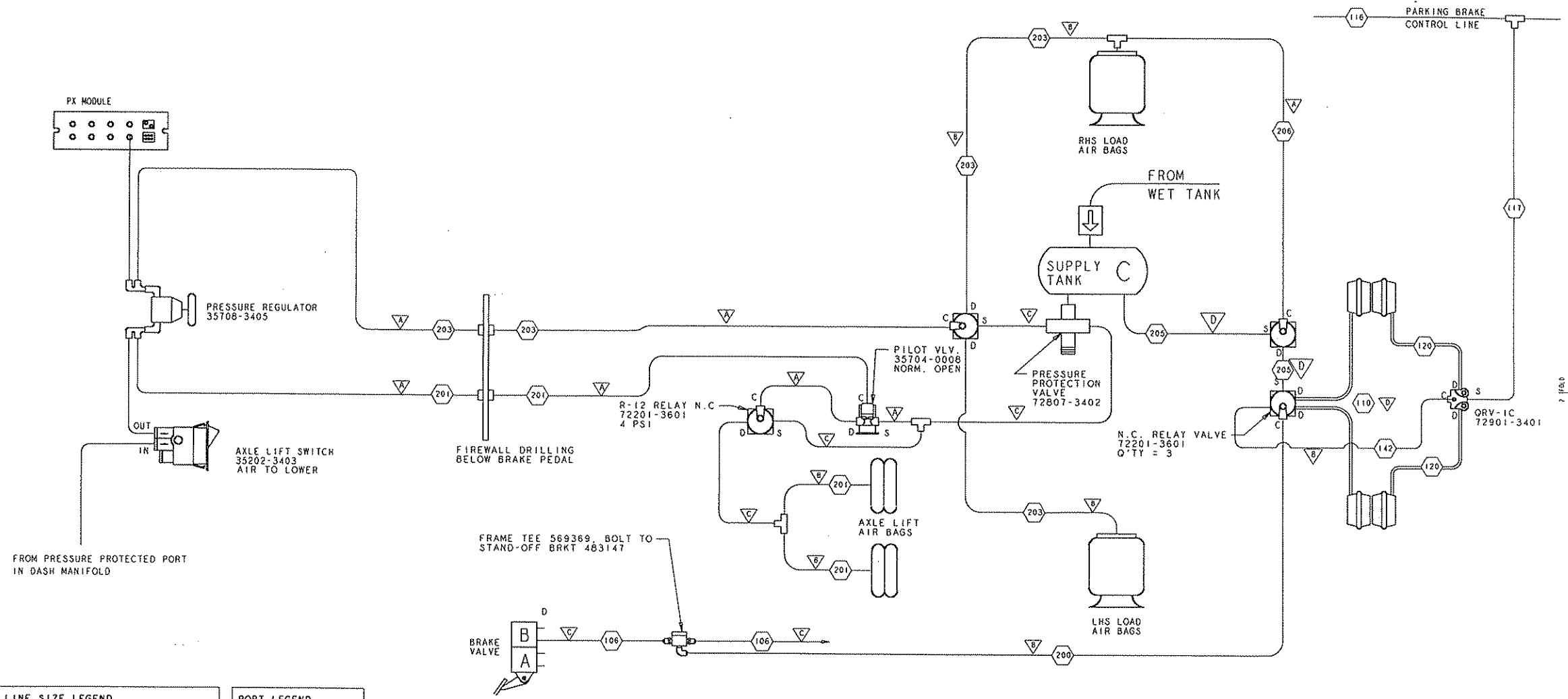
LINE SIZE LEGEND		
SYMBOL	NYLON	HOSE
A	1/4	# 4
B	3/8	# 6
C	1/2	# 8
D	5/8	# 10
E	3/4	# 12
F	3/4 COPPER	
G	1/8	

PORT LEGEND	
SYMBOL	DESC.
S	SUPPLY
D	DELIVERY
C	CONTROL
E	EXHAUST
R	RESERVOIR
A	ACCESSORY

- NOTES:
 1. SINGLE LINES DENOTE FIXED AIR LINES. (NYLON, BRAIDED HOSE, COPPER).
 2. DOUBLE LINES DENOTE FLEXIBLE DROP LINES.
 3. DASHED LINES DENOTE ELECTRICAL.
 4. THIS SCHEMATIC IS SPECIFIC TO THE STAR GAUGE PACKAGE. FOR TELEFLEX INSTALLATION SEE 357B1-3453.

357B1-3467
 PRINT ISSUE DATE
 10/1/81

X AIR SCHEMATIC		COMP. NO.	DESCRIPTION	SIZE	MATERIAL
NEW	REV		WESTERN STAR TRUCKS INC. COMPUTER GRAPHICS KELOWNA, B.C.		
TOLERANCES UNLESS NOTED:		BY	DATE		
MACHINING	± INCH	DRN	FWS	15MAR80	
HOLE CENTERS	± INCH	CKD			
HOLE DIAMETERS	± INCH	APVD	SER	24APR80	
LINEAR	± INCH	ECO		106773-9	
ANGULAR	±	SCALE		NONE	
THIS DOCUMENT CONTAINS PROPRIETARY INFORMATION AND IT SHALL NOT BE USED OR REPRODUCED OR ITS CONTENTS DISCLOSED IN WHOLE OR IN PART WITHOUT THE PRIOR WRITTEN CONSENT OF WESTERN STAR TRUCKS INC., KELOWNA, BC					
AIR SYSTEM PIPING SUSPENSION CONTROL				MR NO. 2218	
				357B1-3467	



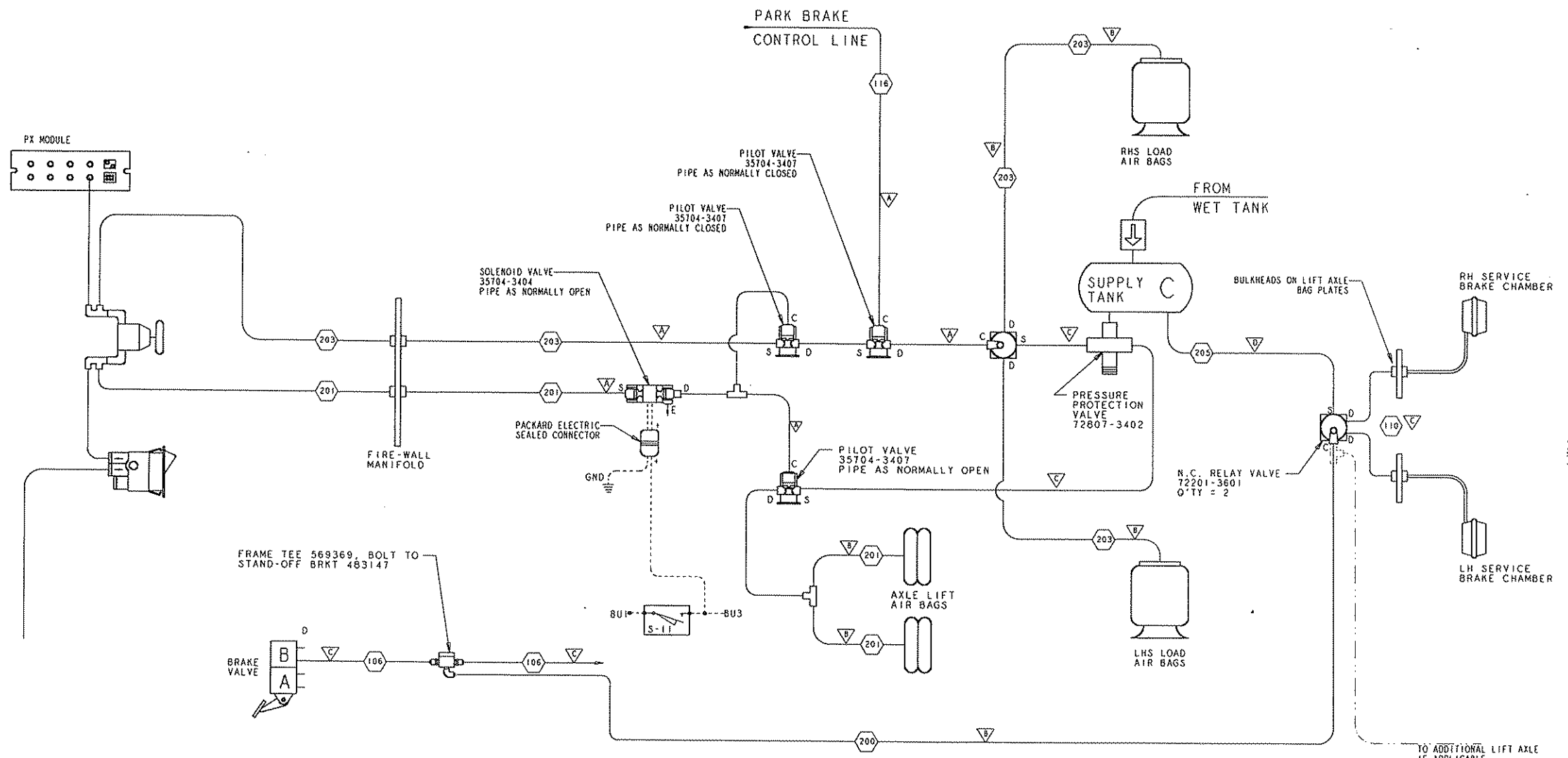
LINE SIZE LEGEND		
SYMBOL	NYLON	HOSE
A	1/4	# 4
B	3/8	# 6
C	1/2	# 8
D	5/8	# 10
E	3/4	# 12
F	3/4 COPPER	
G	1/8	

PORT LEGEND	
SYMBOL	DESC.
S	SUPPLY
D	DELIVERY
C	CONTROL
E	EXHAUST
R	RESERVOIR
A	ACCESSORY

NOTES:
 1. SINGLE LINES DENOTE FIXED AIR LINES. (NYLON, BRAIDED HOSE, COPPER).
 2. DOUBLE LINES DENOTE FLEXIBLE DROP LINES.
 3. THIS SCHEMATIC IS SPECIFIC TO THE STAR GAUGE PACKAGE. FOR TELEFLEX INSTALLATION SEE 35781-3459.

35781-3468
 PART NUMBER
 DATE
 CHG
 HCB

NEW	REV	COMP. NO.	DESCRIPTION	SIZE	MATERIAL
			WESTERN STAR TRUCKS INC. COMPUTER GRAPHICS KELOWNA B.C.		
TOLERANCES UNLESS NOTED:					
MACHINING		± INCH	DWN	FWS	ISMARGO
HOLE CENTERS		± INCH	CKD		
HOLE DIAMETERS		± INCH	APVD	SER	24APROO
LINEAR		± INCH	ECO		108773-9
ANGULAR		±	SCALE		NONE
THIS DOCUMENT CONTAINS PROPRIETARY INFORMATION AND IT SHALL NOT BE USED OR REPRODUCED OR ITS CONTENTS DISCLOSED IN WHOLE OR IN PART WITHOUT THE PRIOR WRITTEN CONSENT OF WESTERN STAR TRUCKS INC. KELOWNA, BC.					
AIR SYSTEM PIPING WATSON-CHALIN LIFT AXLES					M/REF 1328
					35781-3468



LINE SIZE LEGEND		
SYMBOL	NYLON	HOSE
A	1/4	# 4
B	3/8	# 6
C	1/2	# 8
D	5/8	# 10
E	3/4	# 12
F	3/4 COPPER	
G	1/8	

PORT LEGEND	
SYMBOL	DESC.
S	SUPPLY
D	DELIVERY
C	CONTROL
E	EXHAUST
R	RESERVOIR
A	ACCESSORY

- NOTES:
1. SINGLE LINES DENOTE FIXED AIR LINES. (NYLON, BRAIDED HOSE, COPPER).
 2. DOUBLE LINES DENOTE FLEXIBLE DROP LINES.
 3. DASHED LINES DENOTE ELECTRICAL.
 4. THIS SCHEMATIC IS SPECIFIC TO THE STAR GAUGE PACKAGE. FOR TELEFLEX INSTALLATION SEE 357B1-3400.
 5. AXLE WILL LIFT WHEN REVERSE GEAR IS ENGAGED. AXLE REMAINS DOWN WHEN PARK BRAKES ARE APPLIED, HOWEVER, LOAD-AIR BAGS UNLOAD.
 6. THIS INSTALLATION IS NOT APPLICABLE WHEN LIFT AXLE CONTROLS ARE LOCATED IN ENCLOSURE MOUNTED ON FRAME.

REV	DATE	DESCRIPTION	SIZE	MATERIAL
1		SCHEMATIC		
COMP. NO. DESCRIPTION				
WESTERN STAR TRUCKS INC. COMPUTER GRAPHICS KELOWNA, B. C.				
TOLERANCES UNLESS NOTED:				
MACHINING	± INCH	DWN	FMS	15MARGO
HOLE CENTERS	± INCH	CKD		
HOLE DIAMETERS	± INCH	APVD	SER	24APROO
LINEAR	± INCH	ECO		106773-9
ANGULAR	±	SCALE		RORE
THIS DOCUMENT CONTAINS PROPRIETARY INFORMATION AND IT SHALL NOT BE USED OR REPRODUCED OR ITS CONTENTS DISCLOSED IN WHOLE OR IN PART WITHOUT THE WRITTEN CONSENT OF WESTERN STAR TRUCKS INC. KELOWNA, BC				
AIR SYSTEM PIPING LIFT AXLE CONTROLS				MR NO. 1328
				357B1-3469 SH 1 OF 1

357B1-3469
REV 1
PRINT ISSUE DATE
NEW