

REMOVE ALL SHARP EDGES IF IN DOUBT ASK DO NOT SCALE DRAWING CAST, STAMP OR STENCIL PART NUMBER ORIGINAL CREATED ON WSTI
IN SUITABLE LOCATION IN SUITABLE LOCATION SOLID MODELING WORKSTATION

AIR DRYER SYSTEM SCHEMATICS

1|FOLD

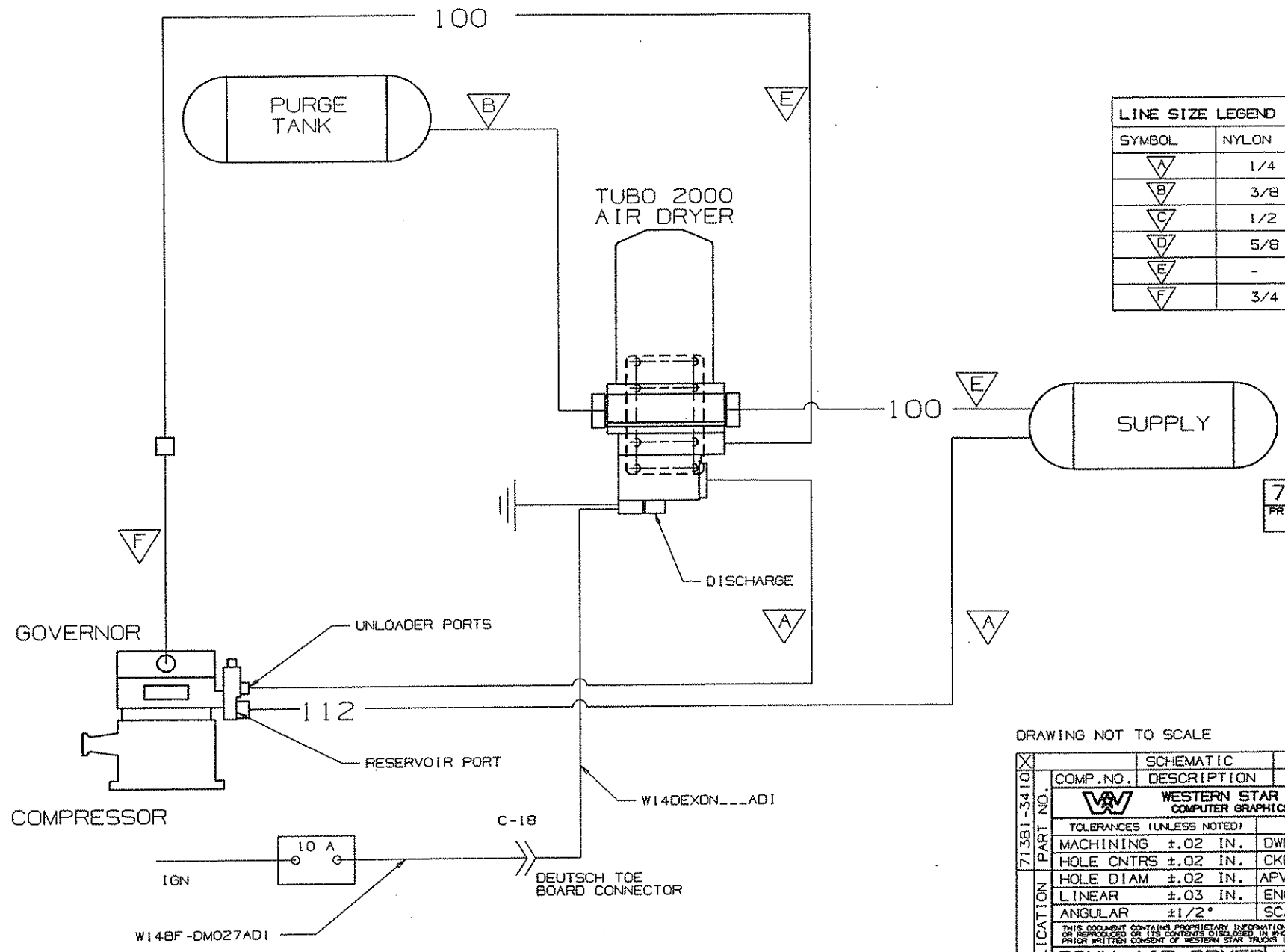
	WESTERN STAR TRUCKS INC. COMPUTER GRAPHICS KELOWNA, B.C.	
	DIVIDER PAGE	REV. NEW SHT 1 OF 1

CAST, STAMP OR STENCIL PART NUMBER IN SUITABLE LOCATION DO NOT SCALE DRAWING IF IN DOUBT, ASK REMOVE ALL SHARP EDGES ORIGINAL CREATED ON WEST COMPUTER GRAPHICS

ENO	CHG	CHANGE	BY	DATE	CKD	APVD
35753	A	UPDATED TO TURBO 2000	NJT	26MAY93		

LINE SIZE LEGEND		
SYMBOL	NYLON	HOSE
△ A	1/4	# 4
△ B	3/8	# 6
△ C	1/2	# 8
△ D	5/8	# 10
△ E	-	# 12
△ F	3/4 COPPER	

713B1-3410
 PRINT ISSUE DATE CHG
 A



DRAWING NOT TO SCALE

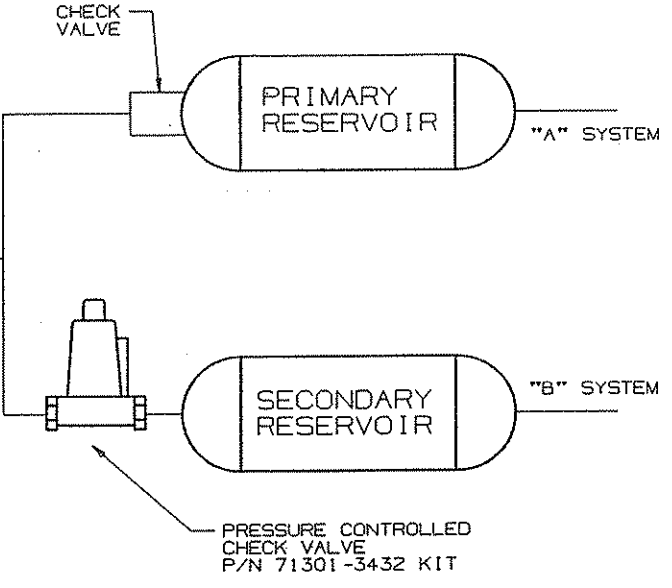
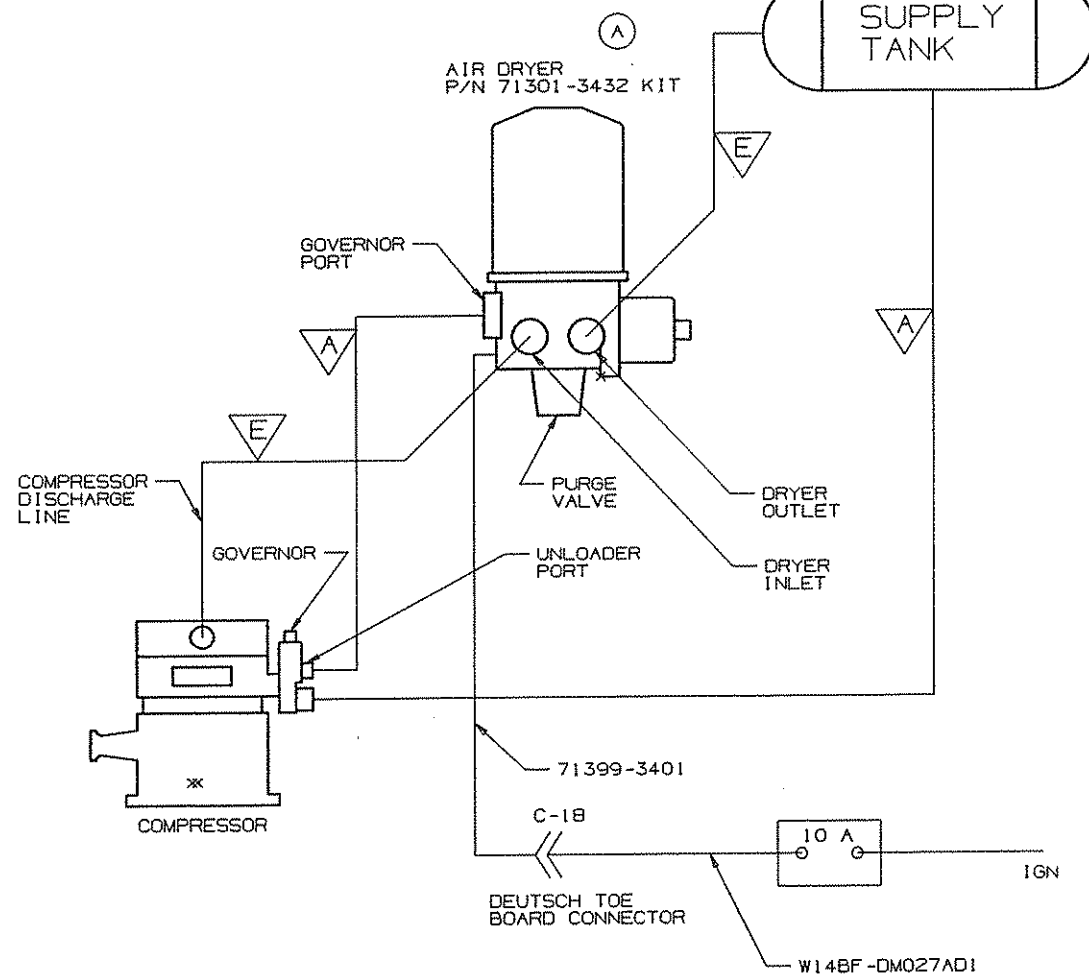
X	SCHEMATIC			
	COMP. NO.	DESCRIPTION	SIZE	MATERIAL
713B1-3410	WESTERN STAR TRUCKS INC. COMPUTER GRAPHICS KELOWNA, B.C.			
	TOLERANCES (UNLESS NOTED)		BY	DATE
	MACHINING	±.02 IN.	DWN	GWJ 25SEP92
	HOLE CNTRS	±.02 IN.	CKD	
	HOLE DIAM	±.02 IN.	APVD	PER 28SEP92
	LINEAR	±.03 IN.	ENO	T 60281
	ANGULAR	±1/2°	SCALE QUARTER	
	THIS DOCUMENT CONTAINS PROPRIETARY INFORMATION AND IT SHALL NOT BE USED OR REPRODUCED OR ITS CONTENTS DISCLOSED IN WHOLE OR IN PART WITHOUT THE PRIOR WRITTEN CONSENT OF WESTERN STAR TRUCKS INC., KELOWNA, B.C.			
	SCHM AIR DRYER TURBO 2000			MR NO. 2270
				713B1-3410

CAST, STAMP, OR STENCIL PART NUMBER IN SUITABLE LOCATION DO NOT SCALE DRAWING IF IN DOUBT, ASK REMOVE ALL SHARP EDGES ORIGINAL CREATED ON WESTI COMPUTER GRAPHICS

ENO	CHG	CHANGE	BY	DATE	CKD	APVD
82698	A	CHANGED PN. 71301-341B TO 71301-3432	PMN	06FEB96		
85163	B	CHANGED PN. 71301-341B TO 71301-3432 CHANGED DRW. NAME TO 1200	PMN	08MAY96		

LINE SIZE LEGEND		
SYMBOL	NYLON	HOSE
	1/4	* 4
	3/8	* 6
	1/2	* 8
	5/8	* 10
	-	* 12
	3/4 COPPER	

SYMBOL	NYLON	HOSE
	1/4	* 4
	3/8	* 6
	1/2	* 8
	5/8	* 10
	-	* 12
	3/4 COPPER	

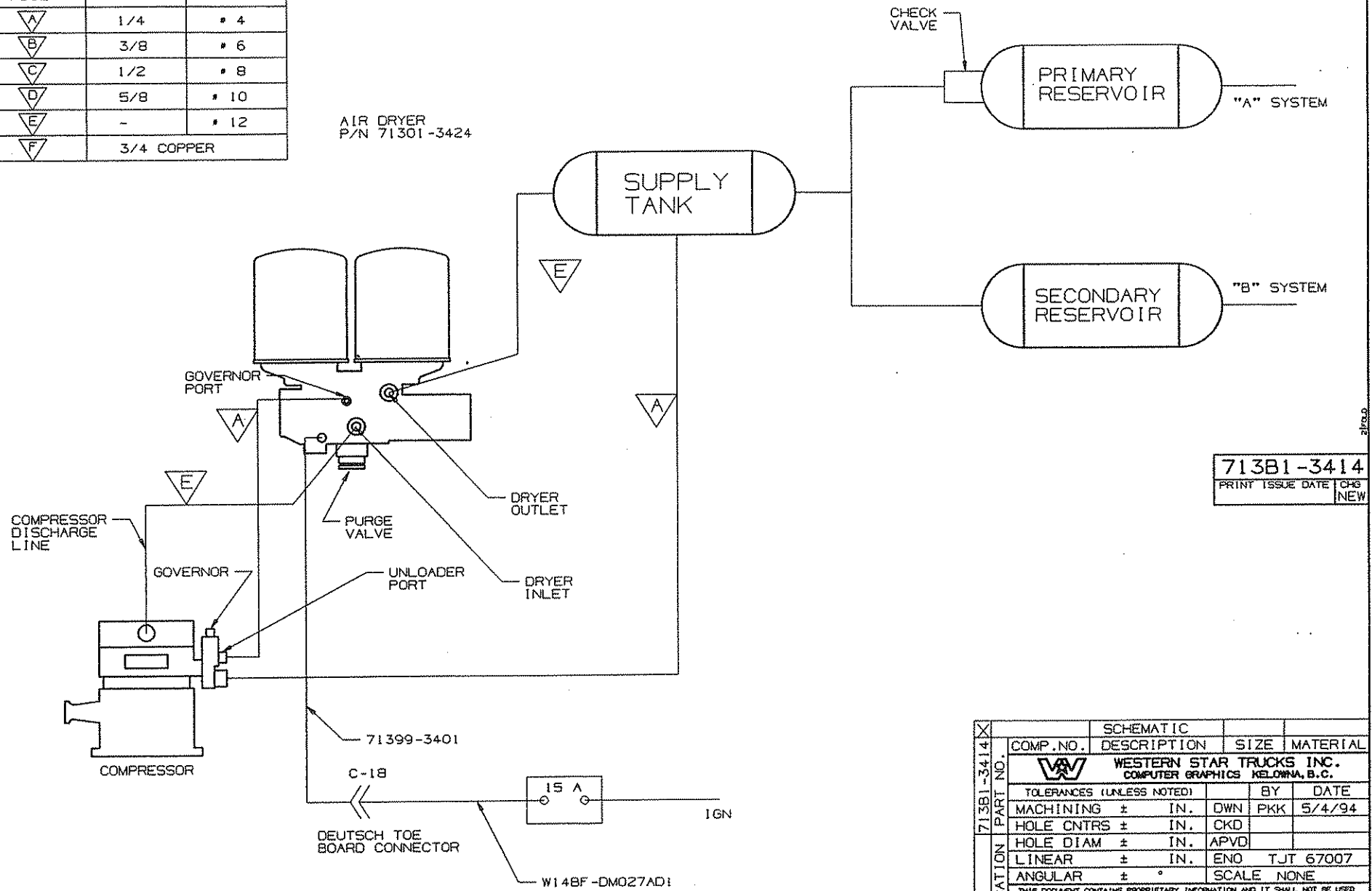


713B1-3411
PRINT ISSUE DATE CHG B

APPLICATION PART NO.	SCHEMATIC		DESCRIPTION		SIZE	MATERIAL
	COMP. NO.	DESCRIPTION	SIZE	MATERIAL		
713B1-3411 A		WESTERN STAR TRUCKS INC. COMPUTER GRAPHICS KELDONA, B.C.				
	TOLERANCES (UNLESS NOTED)		BY	DATE		
	MACHINING	± IN. DWN RHW		25NOV92		
	HOLE CNTRS	± IN. CKD				
	HOLE DIAM	± IN. APVD				
	LINEAR	± IN. ENO TJT	60689			
	ANGULAR	± °	SCALE	NONE		
THIS DOCUMENT CONTAINS PROPRIETARY INFORMATION AND IT SHALL NOT BE USED OR REPRODUCED OR ITS CONTENTS DISCLOSED IN WHOLE OR IN PART WITHOUT THE PRIOR WRITTEN CONSENT OF WESTERN STAR TRUCKS INC., KELDONA, B.C.						
SCHEM-ROC/WAB				MR NO. 2270		
1200 AIR DRYER				713B1-3411		

LINE SIZE LEGEND		
SYMBOL	NYLON	HOSE
△A	1/4	# 4
△B	3/8	# 6
△C	1/2	# 8
△D	5/8	# 10
△E	-	# 12
△F	3/4 COPPER	

AIR DRYER
P/N 71301-3424



713B1-3414
PRINT ISSUE DATE CHG
NEW

APPLICATION PART NO.	SCHEMATIC			
	COMP. NO.	DESCRIPTION	SIZE	MATERIAL
713B1-3414	WESTERN STAR TRUCKS INC. COMPUTER GRAPHICS KELOWNA, B.C.			
	TOLERANCES (UNLESS NOTED)		BY	DATE
	MACHINING ±	IN.	DWN	PKK 5/4/94
	HOLE CNTRS ±	IN.	CKD	
	HOLE DIAM ±	IN.	APVD	
	LINEAR ±	IN.	ENO TJT 67007	
	ANGULAR ±	°	SCALE NONE	
<small>THIS DOCUMENT CONTAINS PROPRIETARY INFORMATION AND IT SHALL NOT BE USED OR REPRODUCED OR ITS CONTENTS DISCLOSED IN WHOLE OR IN PART WITHOUT THE PRIOR WRITTEN CONSENT OF WESTERN STAR TRUCKS INC., KELOWNA, B.C.</small>				
SCHEM-ROC/WAB TWIN AIR DRYER			MR NO. 2270	713B1-3414

CAST, STAMP OR STENCIL PART NUMBER
IN SUITABLE LOCATION

DO NOT SCALE DRAWING

IF IN DOUBT, ASK

REMOVE ALL SHARP EDGES

ORIGINAL CREATED ON WEST
COMPUTER GRAPHICS

ENO

CHG

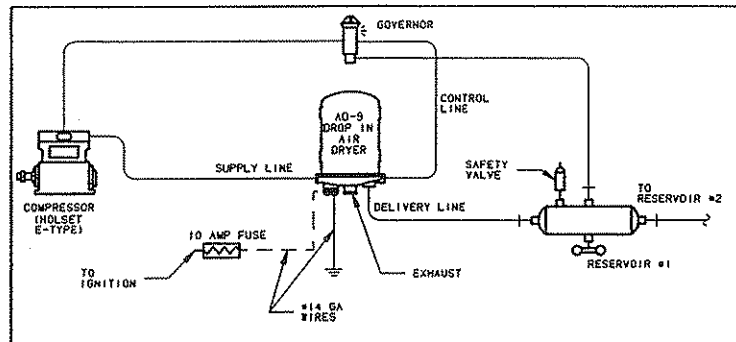
CHANGE

BY

DATE

CKD

APVD



AD-9 DROP-IN AIR DRYER INSTALLATION FOR HOLSET E-TYPE COMPRESSOR SYSTEMS

THIS SCHEMATIC IS INTENDED TO
SHOW COMPONENT RELATIONSHIP ONLY
AND IS NOT A CONSTRUCTION DRAWING.

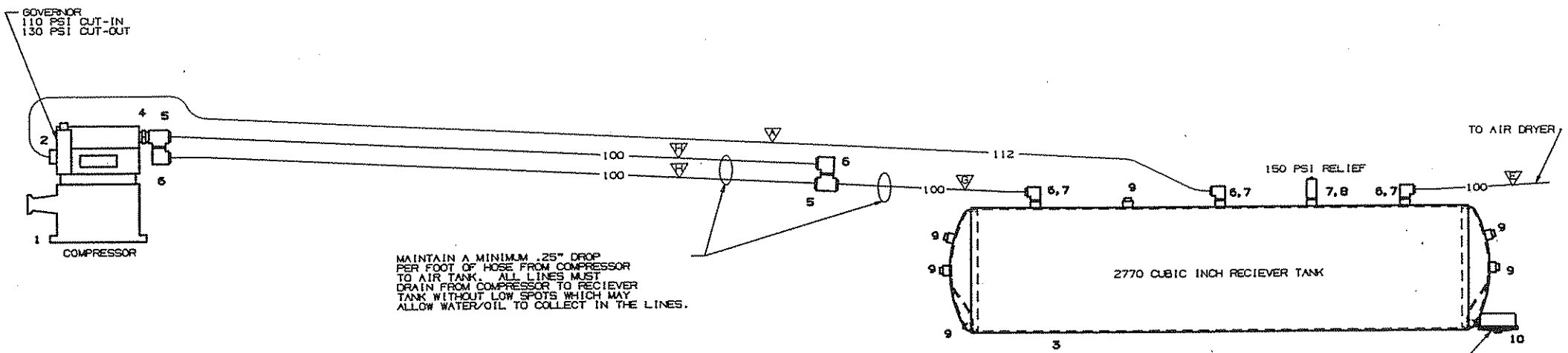
AIR DRYER INSTALLATION INSTRUCTIONS

1. REFERENCE AIR DRYER APPLICATION GUIDE BW-103A.
2. CONNECTOR ASSEMBLY DATA:
PACKARD METRIPACK, 280 SERIES / 2 PIN
HOUSING PART NO. 1202-0599
TERMINAL PART NO. 1207-7412
CABLE SEAL PART NO. 1201-0293
SECONDARY LOCK PART NO. 1203-4446

713B1-3415
PRINT ISSUE DATE CHG
NEW

WESTERN STAR TRUCKS INC. COMPUTER GRAPHICS KELOWNA, B.C.			
TOLERANCES (UNLESS NOTED)		BY	DATE
MACHINING ±.02 IN.	DWN	PKK	25MAY94
HOLE CNTRS ±.02 IN.	CKD		
HOLE DIAM ±.02 IN.	APVD		
LINEAR ±.03 IN.	ENO		37933
ANGULAR ±1/2°	SCALE		NONE
THIS DOCUMENT CONTAINS PROPRIETARY INFORMATION AND IT SHALL NOT BE USED OR REPRODUCED OR ITS CONTENTS DISCLOSED IN WHOLE OR IN PART WITHOUT THE PRIOR WRITTEN CONSENT OF WESTERN STAR TRUCKS INC., KELOWNA, B.C.			
SCHEMATIC AD-9 AIR DRYER		MR NO. 2270 713B1-3415	

ECO	CHG	CHANGE	BY	DATE	CKD	APVD
B46Q4	A	LINE NUMBER WAS 110	STP	19960412		



MAINTAIN A MINIMUM .25" DROP PER FOOT OF HOSE FROM COMPRESSOR TO AIR TANK. ALL LINES MUST DRAIN FROM COMPRESSOR TO RECEIVER TANK WITHOUT LOW SPOTS WHICH MAY ALLOW WATER/OIL TO COLLECT IN THE LINES.

SEE SCHEMATIC 9053641 FOR WIRING OF HEATED AUTOMATIC DRAIN VALVE

ITEM #	DESCRIPTION
1	COMPRESSOR
2	GOVERNOR
3	2770 CU IN RECIEVER TANK
4	COMPRESSOR ADAPTER
5	UNION TEE
6	ELBOW
7	BUSHING
8	PRESSURE RELIEF VALVE
9	PLUG
10	HEATED AUTOMATIC DRAIN VALVE

LINE SIZE LEGEND			
SYMBOL	NYLON	HOSE	TEFLON HOSE
▽	1/4	#4	-
▽	3/8	#6	-
▽	1/2	#8	-
▽	5/8	#10	-
▽	-	#12	-
▽	-	#14	-
▽	-	#16	-
▽	-	-	#16

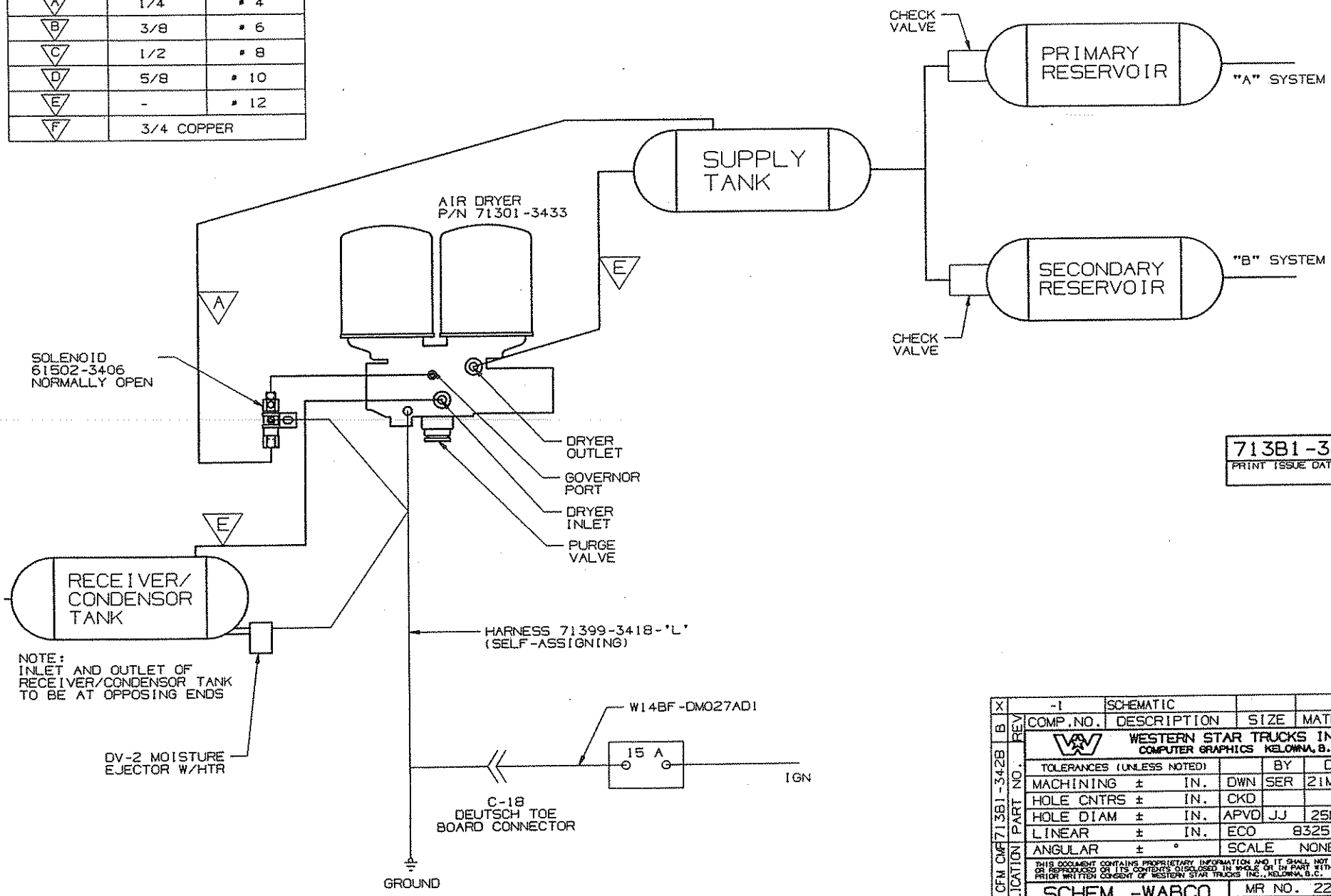
713B1-3427
PRINTED DATE 1996
NEW

-1 SCHEMATIC			
COMP. NO.	DESCRIPTION	SIZE	MATERIAL
WESTERN STAR TRUCKS INC. COMPUTER GRAPHICS WILSON, D.C.			
TOLERANCES (UNLESS NOTED)			
MACHINING	±.02 IN.	DWN	STP 19960325
HOLE CNTRS	±.02 IN.	CKD	
HOLE DIAM	±.02 IN.	APVD	PAF 19960327
LINEAR	±.06 IN.	ECO	B4207
ANGULAR	±1/2°	SCALE	NONE
SCHEMATIC-30+ CFM		MR NO. 2259	
AIR COMP W/DRYERS		713B1-3427	

CAST, STAMP OR STENCIL PART NUMBER IN SUITABLE LOCATION DO NOT SCALE DRAWING IF IN DOUBT, ASK REMOVE ALL SHARP EDGES ORIGINAL CREATED ON WEST1 COMPUTER GRAPHICS

ECO	CHG	CHANGE	BY	DATE	CKD	APVD
84798	A	ADDED CHECK VALVE TO SECONDARY RESERVOIR	SER	23APR96		
87796	B	ADDED DV-2 VALVE, GND WIRE, NOTE	ROS	23SEP96		

LINE SIZE LEGEND		
SYMBOL	NYLON	HOSE
	1/4	# 4
	3/8	# 6
	1/2	# 8
	5/8	# 10
	-	# 12
	3/4 COPPER	



713B1-3428
 PRINT ISSUE DATE CHG
 B

REV	COMP. NO.	DESCRIPTION	SIZE	MATERIAL
X	-1	SCHEMATIC		
B				
REV	WESTERN STAR TRUCKS INC. COMPUTER GRAPHICS KELOWNA, B.C.			
	TOLERANCES (UNLESS NOTED)		BY	DATE
	MACHINING	± IN.	DOWN	SER 21MAR96
	HOLE CNTRS	± IN.	CKD	
	HOLE DIAM	± IN.	APVD	JJ 25MAR96
	LINEAR	± IN.	ECO	83251-3
	ANGULAR	± °	SCALE	NONE
<small>THIS DOCUMENT CONTAINS PROPRIETARY INFORMATION AND IT SHALL NOT BE USED OR REPRODUCED OR ITS CONTENTS DISCLOSED IN WHOLE OR IN PART WITHOUT THE PRIOR WRITTEN CONSENT OF WESTERN STAR TRUCKS INC., KELOWNA, B.C.</small>				
SCHEM -WABCO			MR NO. 2270	
TWIN AIR DRYER			713B1-3428	